



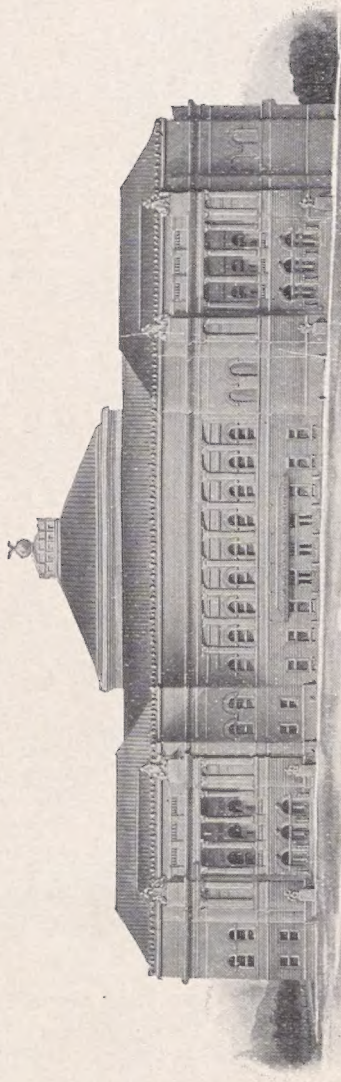
✓  
FOURTEENTH  
ANNUAL EXHIBITION  
CARNEGIE INSTITUTE  
PITTSBURGH  
—  
MCMX

SMITHSONIAN  
INSTITUTION

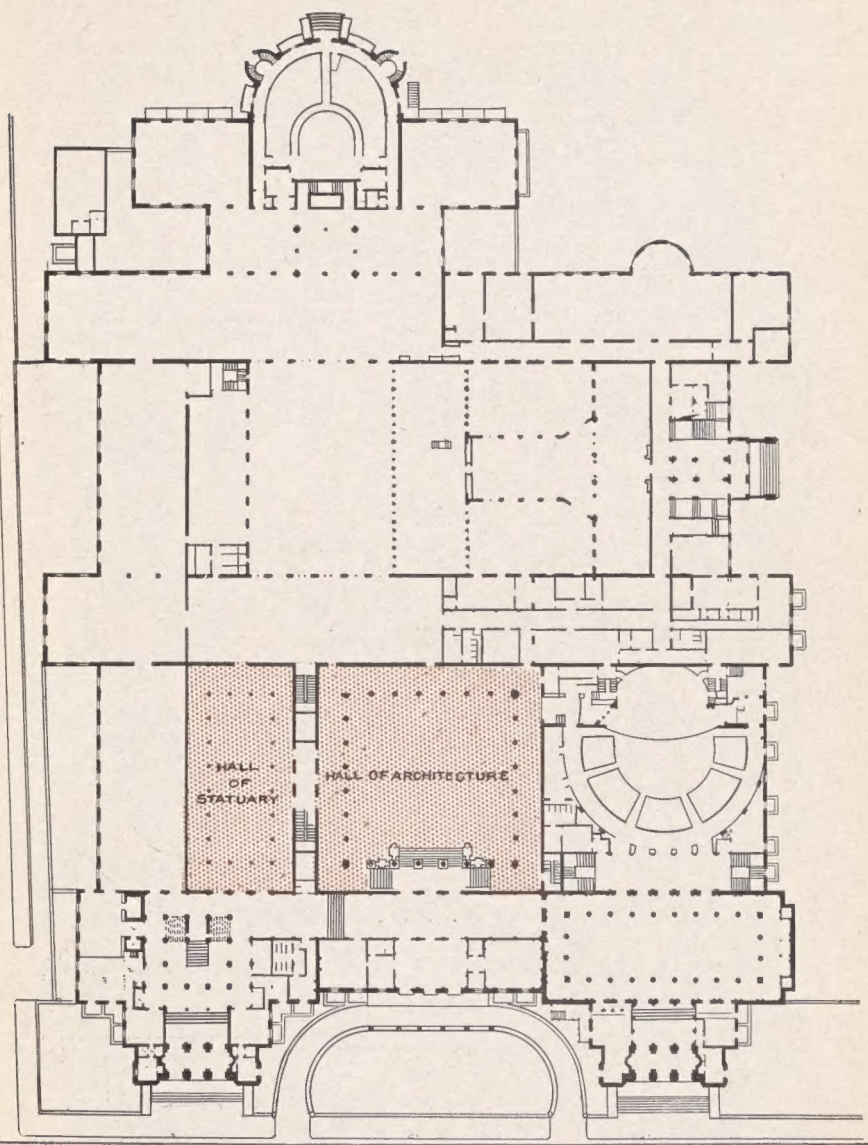
2046

Freer Gallery of Art  
Washington, D. C.



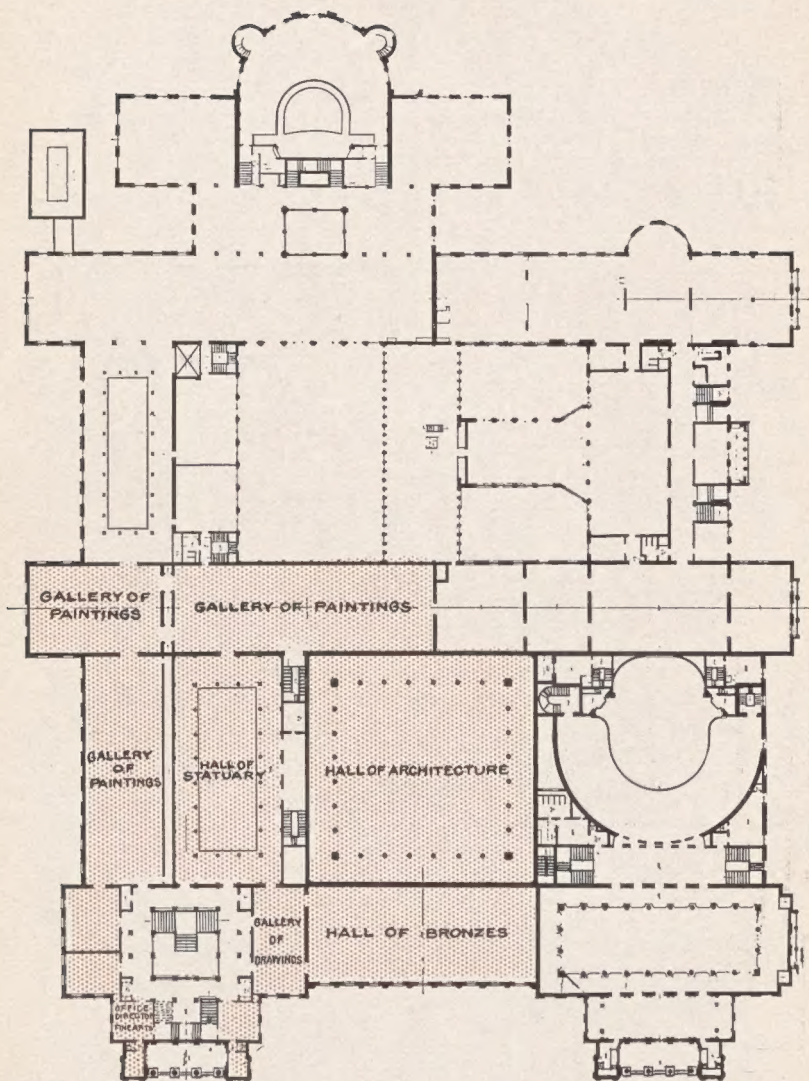




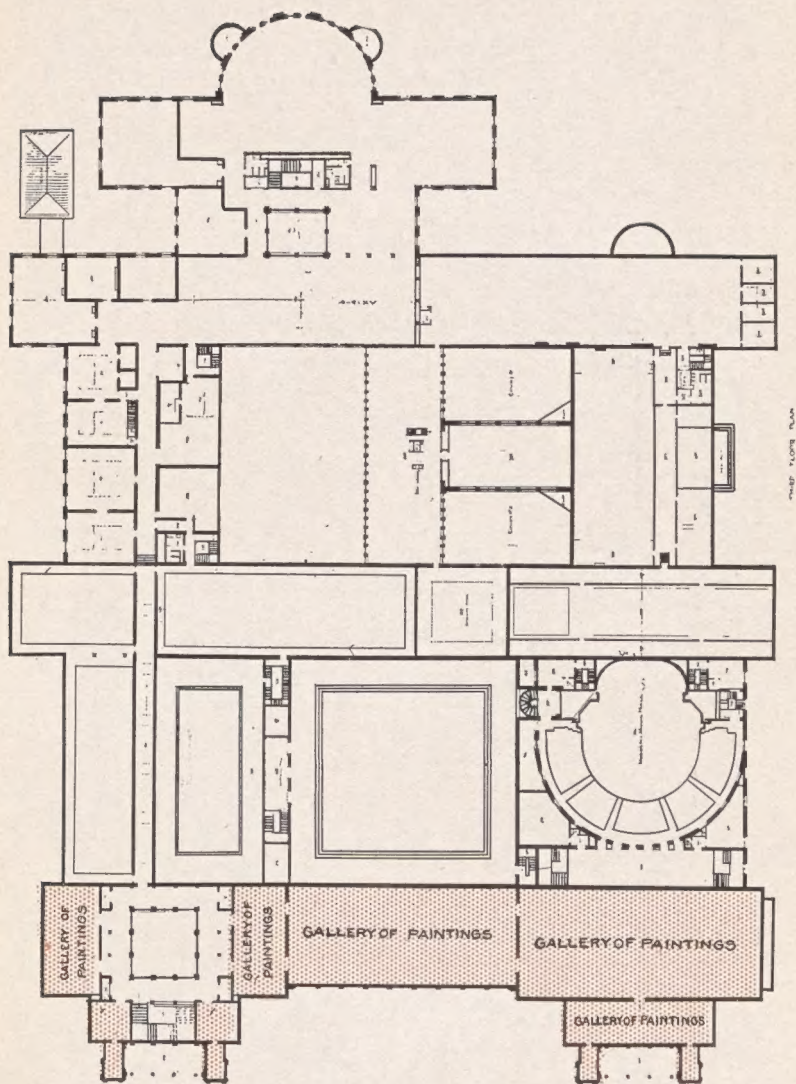


PLAN OF FIRST FLOOR

The parts in color denote the exhibition galleries and halls of the Department of Fine Arts



PLAN OF SECOND FLOOR



PLAN OF THIRD FLOOR









CATALOGUE OF THE FOUR-  
TEENTH ANNUAL EXHIBI-  
TION AT THE CARNEGIE  
INSTITUTE, MAY SECOND  
THROUGH JUNE THIR-  
TIETH, NINETEEN HUN-  
DRED AND TEN



## FINE ARTS COMMITTEE

JOSEPH R. WOODWELL

Chairman

WILLIAM N. FREW

A. BRYAN WALL

WILLIAM McCONWAY

E. M. BIGELOW

DURBIN HORNE

A. C. MAGILL

GEORGE E. SHAW

DIRECTOR OF  
FINE ARTS

JOHN W. BEATTY, M. A.

## TRUSTEES

WILLIAM N. FREW, President  
JOHN D. SHAFER, Vice President  
JAMES H. REED, Treasurer  
SAMUEL H. CHURCH, Secretary

Albert J. Barr	S. C. Jamison
George W. Baum	Rev. A. A. Lambing
Edward M. Bigelow	George A. Macbeth
Dr. F. C. Blessing	James R. Macfarlane
John A. Brashear	Hon. William A. Magee
Joseph Buffington	Dr. A. C. Magill
Samuel H. Church	A. G. MacConnell
George H. Clapp	William McConway
Josiah Cohen	Andrew W. Mellon
F. H. Colhouer	George T. Oliver
A. C. Dinkey	Henry K. Porter
A. J. Edwards	James H. Reed
Morris Einstein	W. Lucien Scaife
R. A. Franks	John D. Shafer
William N. Frew	George E. Shaw
Howard Heinz	Charles L. Taylor
Durbin Horne	A. Bryan Wall
James F. Hudson	Joseph R. Woodwell

## FOREIGN ADVISORY COMMITTEES

### LONDON

Edwin A. Abbey  
Alfred East  
John Lavery  
\*W. Q. Orchardson  
John Singer Sargent  
J. J. Shannon  
\*John M. Swan

### PARIS

Edmond Aman Jean  
P. A. J. Dagnan-Bouveret  
Raphaël Collin  
Charles Cottet  
Walter Gay  
Jean Paul Laurens  
Léon Augustin Lhermitte  
Charles Sprague Pearce  
Jean François Raffaëlli

### MUNICH

Ludwig von Löfftz  
Carl Marr  
Franz von Stuck  
Toby E. Rosenthal

### THE HAGUE

B. J. Blommers  
G. H. Breitner  
Gari Melchers  
H. W. Mesdag

\*Deceased

# JURY OF AWARD

1910

JOHN W. BEATTY, President

WILLIAM M. CHASE

New York City

CHARLES H. DAVIS

Mystic, Connecticut

CHILDE HASSAM

New York City

W. L. LATHROP

New Hope, Pennsylvania

HENRI EUGÈNE LE SIDANER

Paris, France

ALBERT NEUHUÿS

Amsterdam, Holland

LEONARD OCHTMAN

Cos Cob, Connecticut

EDWARD W. REDFIELD

Center Bridge, Pennsylvania

W. ELMER SCHOFIELD

Philadelphia

CHARLES H. WOODBURY

Boston

# HONORS AWARDED BY CARNEGIE INSTITUTE

## Medal of the First Class

carrying with it a prize of \$1,500

- 1896—John Lavery
- 1897—J. J. Shannon
- 1898—D. W. Tryon
- 1899—Cecília Beaux
- 1900—André Dauchez
- 1901—Alfred H. Maurer
- 1902—Loan Exhibition
- 1903—Frank W. Benson
- 1904—W. Elmer Schofield
- 1905—Lucien Simon
- 1907—Gaston La Touche
- 1908—Thomas W. Dewing
- 1909—Edmund C. Tarbell
- 1910—William Orpen

## Medal of the Second Class

carrying with it a prize of \$1,000

- 1896—J. F. Raffaelli
- 1897—Fritz Thaulow
- 1898—Childe Hassam
- 1899—Frank W. Benson
- 1900—Ben Foster
- 1901—Ellen W. Ahrens
- 1902—Loan Exhibition
- 1903—Bryson Burroughs
- 1904—Edmund C. Tarbell
- 1905—Edward W. Redfield
- 1907—Thomas Eakins

- 1908—Henri Eugène Le Sidaner  
1909—George Sauter  
1910—Karl Anderson

### Medal of the Third Class

carrying with it a prize of \$500

- 1896—Cecilia Beaux  
1897—J. Alden Weir  
1898—Alexander Roche  
1899—André Dauchez  
1900—Wm. Sergeant Kendall  
1901—Edmund C. Tartell  
1902—Loan Exhibition  
1903—William L. Lathrop  
1904—Howard Gardiner Cushing  
1905—Childe Hassam  
1907—Olga de Boznanska  
1908—Emil Carlsen  
1909—Bruce Crane  
1910—Edward F. Rook

### Honorable Mention

- 1897—Wilton Lockwood  
1897—Louis Paul Dessar  
1898—E. A. Walton  
1898—John F. Weir  
1899—Lucien Simon  
1899—John H. Twachtman  
1900—Robert W. Allan  
1900—Julius Olsson  
1900—W. Elmer Schofield  
1901—Mary L. Macomber

- 1901—Henri Eugène Le Sidaner  
1902—Loan Exhibition  
1903—David Ericson  
1903—Van Dearing Perrine  
1904—George Sauter  
1904—Martha S. Baker  
1904—H. M. Walcott  
1905—William J. Glackens  
1905—John Sloan  
1905—Charles H. Woodbury  
1907—W. Granville-Smith  
1907—Maurice Greiffenhagen  
1907—Lawton S. Parker  
1908—Frederic Clay Bartlett  
1908—Charles W. Hawthorne  
1908—Arthur Kampf  
1909—Arnesby Brown  
1909—Stanhope A. Forbes  
1909—E. A. Hornel  
1909—Elizabeth Sparhawk-Jones  
1910—Joseph Oppenheimer  
1910—Charles Morris Young  
1910—Daniel Garber  
1910—Louis Betts

### **Chronological Medal**

carrying with it a prize of \$1,000 or \$500

- 1896—Winslow Homer  
1896—Frank W. Benson  
1899—D. W. Tryon  
1900—Edwin A. Abbey



## LIST OF ILLUSTRATIONS

- 2—The Tenth Muse—John W. Alexander  
6—Idlers: August—Karl Anderson  
8—The Communicants—Joseph Bafl  
11—A Banner Bearer—Cecilia Beaux  
15—Head of a Young Girl with a Veil—Frank W. Benson  
18—Apple Blossoms—Louis Betts  
24—Moonlight and Surf—George H. Bogert  
41—Children Playing with a Cat—Mary Cassatt  
43—Studio Interior—William Merritt Chase  
58—Girl with Rose Hat—Charles Cottet  
64—In April—Charles H. Davis  
72—Portrait of John W. Alexander—Frank Duveneck  
74—An English Manor—Alfred East  
81—Portrait of Mlle, Lapojnikoff—Nicholas Fechin  
85—February Sunshine—Stanhope A. Forbes  
91—Hills of Byram—Daniel Garber  
119—Brooklyn Bridge—Childe Hassam  
116—Gloucester Inner Harbor—Childe Hassam  
151—Return with the Catch—Charles W. Hawthorne  
153—Portrait—Robert Henri  
157—The Chase—E. A. Hornel

- 178—Italian Comedians—Gaston La Touche  
182—Houses on the Canal, Bruges—Henri Eugène Le Sidaner  
201—May Time—Willard L. Metcalf  
214—Landscape—J. Francis Murphy  
215—Rustic Interior—Albert Neuhuys  
220—October Haze—Leonard Ochman  
222—Chinese Porcelain—Joseph Oppenheimer  
223—Portrait of the Artist—William Orpen  
232—East End of Fisher's Island—Henry W. Ranger  
234—The White House—Edward W. Redfield  
239—Laurel—Edward F. Rook  
245—Portrait of Miss Brice—John S. Sargent  
248—March Sunlight—W. Elmer Schofield  
256—Girl with Carnations—Lucien Simon  
263—Grande Place, Montreuil—P. Wilson Steer  
269—An Opalescent River—George Gardner Symons  
273—Winged Figure—Abbott H. Thayer  
286—The Willows—A. Bryan Wall  
291—Pan and the Wolf: Landscape—J. Alden Weir  
301—The Valley—Charles H. Woodbury  
304—Farmhouse in Winter—Charles Morris Young

## ACKNOWLEDGMENT



The Department of Fine Arts makes grateful acknowledgment to the members of the Jury of Award for valuable service rendered to the Institute and to art in America, and to those who have generously loaned paintings to the Institute and to the artists who entered paintings for exhibition

The names of the jurors appear in this catalogue

The following are the names of the contributors:

- Mr. Arthur T. Aldis, Lake Forest, Illinois
- Art Association of Indianapolis
- Mr. C. D. Armstrong, Pittsburgh
- Mrs. William H. Bliss, New York
- Boston Art Club
- Miss Helen O. Brice, New York
- Mrs. James A. Burden
- John Caldwell Estate, Pittsburgh
- Mr. William Merritt Chase, New York
- Cincinnati Museum Association
- Mr. Henry L. Corbett, Portland, Oregon
- Corcoran Gallery of Art, Washington, D. C.
- Messrs. Durand-Ruel and Sons, New York
- Mr. William T. Evans, Montclair, New Jersey
- Miss Henrietta E. Failing, Portland, Oregon

Mrs. Henry P. Fairbanks, New York

Mr. J. R. Findlay, Edinburgh

Mr. Charles L. Freer, Detroit

Mr. Robert C. Hall, Pittsburgh

Mrs. J. Horace Harding, New York

Mr. Alexander C. Humphreys, New York

Mr. E. Lomont, Sr., Lure (Haute-Saône)

France

Mrs. William S. Marchant, London

Mrs. Sydney R. Mason, Whitinsville,

Massachusetts

Metropolitan Museum of Art, New York

Mrs. Frank Moore, Pittsburgh

Mr. Alexander Morten, New York

Mount Royal Club, Montreal

Muncie Art Association

Musée de l'Académie des Beaux-Arts, St.

Petersburg

Mr. Thomas McKean, Rosemont, Penn-  
sylvania

National Gallery of Art, Smithsonian In-  
stitution, Washington, D. C.

Mr. John R. Neill, Philadelphia

Mrs. William H. Nicolls, Brooklyn

Mr. William Nicholson, London

Mr. Charles J. Paine, Boston

Pennsylvania Academy of the Fine Arts,  
Philadelphia

Portland Art Association

Rhode Island School of Design, Providence

Mr. Henry Smith, New York

Mr. Ferruccio Stefani, Venice

Mr. John Stevenson, Jr., Sharon, Pennsylvania

Mr. Charles P. Taft, Cincinnati

Telfair Academy of Arts and Sciences,  
Savannah, Georgia

Trustees of Public Library, Erie, Pennsylvania

Union League Club, Chicago

Mr. C. E. S. Wood, Portland, Oregon

Dr. George Woodward, Philadelphia

Worcester Art Museum

Mr. R. A. Workman, London

**M**OST OF THE PAINTINGS IN THIS COLLECTION ARE FOR SALE, AND VISITORS ARE INVITED TO SEEK INFORMATION IN REFERENCE TO THEM. INQUIRIES FOR PRICES MAY BE MADE AT THE DESKS OF THE CATALOGUE CLERKS IN THE GALLERIES. PRICES AND ADDITIONAL INFORMATION MAY BE OBTAINED AT THE OFFICE OF THE DIRECTOR OF FINE ARTS

# CATALOGUE



The international collection of paintings may be found in the following galleries on the third floor: I, J, K, L, M, N, and O. In the alphabetical index at the end of the catalogue may be found the number of each picture with the letter indicating the gallery in which it is exhibited

Paintings marked with an asterisk (\*) did not compete for honors. They were: first, works not complying with published conditions; second, those not entered in competition; third, works by members of the Jury of Award

Paintings by members of the Jury and Foreign Advisory Committees were exempt from jury action



Adams, W. Dacres, London, England.

Member of the New English Art Club,  
London

1—The Tourists

Alexander, John White, New York,  
New York; born, Pittsburgh, Pennsylv-  
vania. Member of the International So-  
ciety of Sculptors, Painters and Gravers,  
London; Société Nouvelle, Paris; Na-  
tional Academy of Design, National So-  
ciety of Mural Painters, Architectural  
League, Fine Arts Federation, Fine  
Arts Society, New York; Honorary  
Member of the Secession Society,  
Munich, and of the Secession Society,  
Vienna. Represented in the Luxem-  
bourg, Paris; in collections in St. Peters-

burg and Odessa; Metropolitan Museum of Art, New York; School of Design, Providence, R. I.; Pennsylvania Academy of the Fine Arts, Philadelphia; Museum of Fine Arts, Boston; Cincinnati Art Museum; Carnegie Institute; Harvard, Princeton and Columbia Universities; Wheaton Seminary, Norton, Massachusetts; Radcliffe College; Library of Congress, Washington. Temple Gold Medal, Pennsylvania Academy of the Fine Arts, 1897; Lippincott Prize, Pennsylvania Academy of the Fine Arts, 1899; Gold Medal, Exposition Universelle, Paris, 1900; Honorary Degree of Master of Arts, Princeton University; Carnegie Prize, Society of American Artists, 1901; Gold Medal, Pan-American Exposition, Buffalo, 1901; Knight of the Legion of Honor, France, 1901; Gold Medal of Honor, Pennsylvania Academy



John White Alexander



Copyright Detroit Publishing Company

JOHN W. ALEXANDER

2—The Tenth Muse



of the Fine Arts, 1903; Gold Medal, Universal Exposition, St. Louis, 1904

2—The Tenth Muse\*

3—A Summer Day

Allan, Robert W., London, England; born Glasgow, Scotland. Member of the Society of Oil Painters, and of the Royal Society of Painters in Water Colours, London; Vice-President of Royal British Colonial Society of Artists. Represented in collections in Aberdeen, Leeds, Sydney, Melbourne, Glasgow, Liverpool, Hull, and Manchester. Silver Medal, Exposition Universelle, Paris, 1889; Honorable Mention, Carnegie Institute, 1900

4—Towards Sunset

5—Harbour of Rest

Anderson, Karl, New York, New York; born, Oxford, Ohio

6—Idlers: August

*Awarded Medal of the Second Class,  
Carnegie Institute, 1910*



Robert W. Allan

André, Albert; born, Lyons, France  
7—Still Life\*

Bail, Joseph, Paris, France; born, Limonest, France. Member of the Société des Artistes Français. Represented in the Luxembourg, Paris, and in museums at Lyons and Nancy. Honorable Mention, Salon, Paris, 1885; Medal of the Third class, 1886; Silver Medal, Exposition Universelle, Paris, 1889; Gold Medal, Exposition Universelle, Paris, 1900; Medal of Honor, Salon, Paris, 1902; H. C., Société des Artistes Français; Knight of the Legion of Honor, France, 1900

8—The Communicants

Beal, Gifford, New York, New York. Member of the American Water Color Society; Associate of the National Academy of Design, New York. Represented in the San Francisco Institute of Art. Third Prize, Worcester Art Museum, 1903; Bronze Medal, Universal Expositi-



Karl Anderson







KARL ANDERSON

6—Idlers: August.      Awarded Medal of the Second Class,  
Carnegie Institute, 1910



tion, St. Louis, 1904; Samuel T. Shaw Purchase Prize, 1909; First Hallgarten Prize, National Academy of Design, 1910  
9—The Palisades\*

**Beaux, Cecilia**, East Gloucester, Massachusetts; born, Philadelphia, Pennsylvania. Member of the Société Nationale des Beaux-Arts, Paris; National Academy of Design, New York. Represented in the Pennsylvania Academy of the Fine Arts, Philadelphia. Mary Smith Prize, Pennsylvania Academy of the Fine Arts, 1885, 1887, 1901, and 1902; Dodge Prize, National Academy of Design, New York, 1893; Medal of the third class, Carnegie Institute, 1896; Medal of the first class, Carnegie Institute, 1899; Gold Medal, Exposition Universelle, Paris, 1900; Temple Gold Medal, Pennsylvania Academy of the Fine Arts, 1900; Gold Medal, Pan-American Exposition,



Cecilia Beaux

Buffalo, 1901; Gold Medal, Universal  
Exposition, St. Louis, 1904

10—The Shawl Costume

11—A Banner Bearer

Becker, Benno, Munich, Germany; born,  
Memel, Prussia. Member of the Seces-  
sion Society, Munich; Deutscher Künst-  
lerbund. Represented in the New Royal  
Pinakothek, Munich. Medal of the sec-  
ond class, Munich, 1901; Honorable  
Mention, Exposition Universelle, Paris,  
1900

12—Cypresses

Bellows, George W., New York, New  
York; born, Columbus, Ohio. Associate  
of the National Academy of Design,  
New York. Represented in the Penn-  
sylvania Academy of the Fine Arts, Phil-



Benno Becker



JOSEPH BAIL

8—The Communicants



adelphia. Second Hallgarten Prize, National Academy of Design, 1908

13—A Morning Snow

14—Excavation at Night

**Benson, Frank W.**, Salem, Massachusetts; born, Salem. Member of the National Academy of Design, Ten American Painters, New York; National Institute of Arts and Letters. Represented in the National Library, Cincinnati Museum, Providence School of Design, Metropolitan Museum of Art, New York, and Carnegie Institute. Third Hallgarten Prize, National Academy of Design, 1889; Clarke Prize, National Academy of Design, 1891; Medal, Columbian Exposition, Chicago, 1893; Medal, Charitable Mechanics Association, Boston; Ellsworth Prize, Art Institute of Chicago; Cleveland Art Association Prize; Jordan Prize, Boston, 1894 and



George W. Bellows

1895; Shaw Prize, Society of American Artists, 1896; Chronological Medal, Carnegie Institute, 1896; Medal of the second class, Carnegie Institute, 1899; Silver Medal, Exposition Universelle, Paris, 1900; Silver Medal, Pan-American Exposition, Buffalo, 1901; Lippincott Prize, Pennsylvania Academy of the Fine Arts, 1903; Gold Medal, Carnegie Institute, 1903; Two Gold Medals, Universal Exposition, St. Louis, 1904; Second Prize, Corcoran Gallery of Art, Washington, 1907; Gold Medal, Philadelphia Art Club; Temple Gold Medal, Pennsylvania Academy of the Fine Arts; Harris Medal, Chicago, 1909

15—Head of a Young Girl with a Veil

16—A Rainy Day\*



Frank W. Benson



CECILIA BEAUX

11—A Banner Bearer



Betts, Louis, Chicago, Illinois; born, Little Rock, Arkansas. Fellowship of the Pennsylvania Academy of the Fine Arts. Represented in the Art Institute of Chicago; Armour Institute; University of Chicago

17—Portrait of Mrs. Edward F. Carry

18—Apple Blossoms

*Awarded Honorable Mention,  
Carnegie Institute, 1910*

Bittinger, Charles, New York, New York; born, Washington, D. C. Bronze Medal, Universal Exposition, St. Louis, 1904; Second Hallgarten Prize, National Academy of Design, New York, 1909

19—The Blue Gown

Blackstone, Harriet, Glencoe, Illinois; born, New York. Member of the Society of Chicago Artists; American Woman's Art Association, Paris

20—Portrait of James Edwin Miller



Louis Betts

Blanche, Jacques Émile, Paris, France; born, Paris. Member of the Société Nationale des Beaux-Arts, Paris, the Secession Society, Munich, and the International Society of Sculptors, Painters and Gravers, London. Represented in the Luxembourg, Paris, and in the museum at Rouen. Silver Medal, Munich, 1891; Knight of the Legion of Honor, France, 1898; Gold Medal, Exposition Universelle, Paris, 1900; Gold Medal, Munich, 1901; Grand Gold Medal, Venice

21—Nancy McKean\*

Blumenschein, Ernest Leonard, Paris, France; born, Pittsburgh, Pennsylvania. Member of the Society of Illustrators, New York, and of the American Art Association, Paris. Beck Prize, Philadelphia Water Color Club

22—Portrait of Ellis Parker Butler and Family

23—Allegory in honor of a Barrymore Child



FRANK W. BENSON

15—Head of a Young Girl with a Veil



**Bogert, George H.,** New York, New York; born, New York. Member of the Society of Landscape Painters and of the National Academy of Design, New York. Represented in the Museum of Fine Arts, St. Louis; Pennsylvania Academy of the Fine Arts, Philadelphia; Brooklyn Institute of Arts and Sciences; Metropolitan Museum of Art, New York; Corcoran Gallery of Art, Washington, D. C. Honorable Mention, Pennsylvania Academy of the Fine Arts, 1892; Webb Prize, Society of American Artists, 1898; First Hallgarten Prize, National Academy of Design, 1899; Bronze Medal, Exposition Universelle, Paris, 1900; Silver Medal, Pan-American Exposition, Buffalo, 1901; Silver Medal, Universal Exposition, St. Louis, 1904

24—Moonlight and Surf

25—Approach of Evening



George H. Bogert

**Borchardt, Hans**, Munich, Germany. Member of the Secession Society, Munich; Corresponding Member of the Secession Society, Berlin; Member of the Association of German Artists. Represented in the Pinakothek, Munich. Honorable Mention, Paris, 1900; Medal of the second class, Munich, 1905

26—At the Door\*

**Borie, Adolphe**, Philadelphia, Pennsylvania. Carol Beck Gold Medal, Pennsylvania Academy of the Fine Arts, 1910

27—Lady with Black Scarf

**Boznanska, Olga de**, Paris, France; born, Cracow, Austria. Member of the Société Nationale des Beaux-Arts, Paris, and of the International Society of Sculptors, Painters and Gravers, London.



Olga de Boznanska



LOUIS BETTS

18—Apple Blossoms,  
Institute, 1910

Awarded Honorable Mention, Carnegie



Represented in the Luxembourg, Paris, and in the National Museum of Cracow. Gold Medal, Vienna, 1894; Gold Medal, New Gallery, London, 1900; Honorable Mention, Exposition Universelle, Paris, 1900; Gold Medal, International Exposition, Munich, 1905; Medal of the third class, Carnegie Institute, 1907

28—Motherhood

29—Study of a Young Man\*

**Bramley, Frank**, London, England; born near Boston, Lincolnshire, England. Associate of the Royal Academy of Arts, London, and of the Société Nationale des Beaux-Arts, Paris. Represented in the Chantrey Bequest collection, Tate Gallery, London; Carnegie Institute; in collections at Venice and at Cape Town. Medal of the second class, Salon, Paris, 1892; Silver Medal, Exposition Universelle, Paris, 1900; Bronze Medal, Chicago

30—Delicious Solitude



Frank Bramley

**Breckenridge, Hugh H.**, Fort Washington, Pennsylvania; born, Leesburg, Virginia. Fellowship of the Pennsylvania Academy of the Fine Arts, Philadelphia; Member of the New York Water Color Club, and of the Philadelphia Water Color Club. Represented in the Art Club, Philadelphia, and in collections in New York, Chicago, Pittsburgh, and Cleveland. Medal, Atlanta Exposition, 1895; Honorable Mention, Exposition Universelle, Paris, 1900; First Toppan Prize, Pennsylvania Academy of the Fine Arts, Philadelphia; Bronze Medal, Pan-American Exposition, Buffalo, 1901; Second Corcoran Prize, Washington, D. C., 1903; Gold Medal, Art Club, Philadelphia, 1907; First Prize, Washington Water Color Club, 1908

31—The Open Garden



Hugh H. Breckenridge



GEORGE H. BOGERT  
24—Moonlight and Surf



**Brown, T. Austen**, London, England; born, Edinburgh, Scotland. Associate of the Royal Scottish Society Academy, Edinburgh, and of the Société Nationale des Beaux-Arts, Paris; Corresponding Member of the Société Royale des Beaux-Arts, Brussels. Represented in the Pinakothek, Munich; National Galleries of Dresden, Budapest, and Brussels, and corporation galleries of Mannheim, Glasgow, Exeter, and Leeds. Medal of the first class, Munich, 1896; Medal of the second class, Munich, 1891; Medal of the first class, Dresden; Grand Gold Medal, Budapest; Silver Medal, Barcelona

32—Going to Work

**Brush, George de Forest**, New York, New York; born, Shelbyville, Tennessee. Member of the National Academy of



T. Austen Brown

Design, and of the National Institute of Arts and Letters, New York. Represented in the Museum of Fine Arts, Boston; Corcoran Gallery of Art, Washington, D. C.; Metropolitan Museum of Art, New York. First Hallgarten Prize, National Academy of Design, 1888; Medal, Columbian Exposition, Chicago, 1893; Temple Gold Medal, Pennsylvania Academy of the Fine Arts, Philadelphia, 1897; Gold Medal, Exposition Universelle, Paris, 1900; Gold Medal, Pan-American Exposition, Buffalo, 1901; Gold Medal, Universal Exposition, St. Louis, 1904

33—Mother and Child\*

Bunce, William Gedney, Hartford, Connecticut; born, Hartford. Member of the National Academy of Design, New York, and of the National Institute of Arts and Letters. Represented in the



William Gedney Bunce

Metropolitan Museum of Art, New York. Bronze Medal, Exposition Universelle, Paris, 1900; Silver Medal, Pan-American Exposition, Buffalo, 1901; Silver Medal, Charleston Exposition, 1902; Silver Medal, Universal Exposition, St. Louis, 1904

34—Evening in Venice

Caliga, I. H., Salem, Massachusetts; born, Auburn, Indiana

35—Portrait of Henry Fitz Gilbert Waters\*

36—The Blue Scarf

Caputo, Ulisse, Paris, France. Represented in the collection of the King of Italy. Medal of the third class, Salon, Paris, 1909; Medal of the second class, International Exhibition, Munich, 1909

37—Tea

38—Between Acts

**Carlsen, Emil**, New York, New York; born, Copenhagen, Denmark. Member of the National Academy of Design, New York. Represented in the Metropolitan Museum of Art, New York, and in the Brooklyn Institute of Arts and Sciences. Shaw Prize, Society of American Artists, 1904; Gold Medal, Universal Exposition, St. Louis, 1904; Webb Landscape Prize, Society of American Artists, 1905; Inness Gold Medal, National Academy of Design, 1907

39—Open Sea

40—Ripening Corn

**Cassatt, Mary**, Paris, France; born, Pittsburgh, Pennsylvania. Represented in the Luxembourg, Paris. Lippincott Prize, Pennsylvania Academy of the Fine Arts, Philadelphia, 1904; Chevalier of the Legion of Honor, France, 1904

41—Children Playing with a Cat\*

42—Reading\*



Emil Carlsen



MARY CASSATT

41—Children Playing with a Cat



Chase, William Merritt, New York, New York; born, Franklin, Indiana. Member of the National Academy of Design, Ten American Painters, New York; Secession Society, Munich; International Society of Sculptors, Painters and Gravers, London. Represented in the Metropolitan Museum of Art, New York; Pennsylvania Academy of the Fine Arts, Philadelphia; Art Institute of Chicago; Carnegie Institute, Pittsburgh; New Pinakothek, Munich; Boston Museum of Fine Arts; Herron Art Institute, Indianapolis, Indiana; St. Louis Museum of Fine Arts; Providence Art Club. Medal, Centennial Exposition, Philadelphia, 1876; Honorable Mention, Salon, Paris, 1881, Medal, Munich, 1883; Silver Medal, Salon, Paris, 1889; First Prize, Cleveland Art Association, 1894; Samuel T. Shaw Prize, Society of American Artists, 1895; Gold Medal of Honor,



William Merritt Chase

Pennsylvania Academy of the Fine Arts, 1895; Gold Medal, Exposition Universelle, Paris, 1900; Temple Gold Medal, Pennsylvania Academy of the Fine Arts, 1901; Gold Medal, Pan-American Exposition, Buffalo, 1901; Gold Medal, Charleston Exposition, 1902; First Corcoran Prize, Society of Washington Artists, 1904; Order of Saint Michael of Bavaria, 1905

43—Studio Interior\*

44—Portrait of a Lady\*

45—A Literary Critic\*

46—Girl in Japanese Gown\*

**Chimona**, Nicolaus, St. Petersburg, Russia; born in the Crimea, South Russia. Member of the Académie des Beaux-Arts, St. Petersburg. Represented in the National Museum of Alexander III, and in the Museum of the Academy, St. Pe-



WILLIAM M. CHASE  
43—Studio Interior



tersburg. First Imperial Prize, Academy, St. Petersburg; Gold Medal, Munich, 1909.

47—Winter Day

48—Attica, Greece

**Chudant, Jean Adolphe, Paris, France;** born, Besançon, France. Member of the Société Nationale des Beaux-Arts, Paris. Represented in the Luxembourg, Paris, and in the Pinakothek, Munich. Commander of the Nichan Iftikar; Officer of the Academy, France; officer of the Liberator; Officer of the Nichan el Anouar; Officer of the Black Star; H. C., Salon, Paris, 1898; Bronze Medal, Exposition Universelle, Paris, 1900

49—Orchard in April

**Ciardi, Beppe, Venice, Italy.** Member of the Academy of Fine Arts, Venice. Represented in museums in Rome, Venice, Munich and Udine. Medal of the second

class, Munich, 1901; Silver Medal, Universal Exposition, St. Louis, 1904; State Gold Medal, Vienna International Exhibition, 1909; Gold Medal, Rimini, 1909

50—Hay Making

Clark, Alson Skinner, Chicago, Illinois; born, Chicago. Member of the Society of Western Artists, and of the American Art Association, Paris. Represented in the Municipal League Collection, Watertown, New York. Bronze Medal, Universal Exposition, St. Louis, 1904; Martin B. Cahn Prize, Art Institute of Chicago, 1906

51—High Noon; Madrid

Clarkson, Ralph Elmer, Chicago, Illinois; born, Amesbury, Massachusetts. Member of the Society of Western Artists; Chicago Society of Artists; Municipal



Max Clarenbach

Art League of Chicago; Municipal Art  
Commission of Chicago; New York  
Water Color Club

52—Portrait of E. G. Keith, Esq.\*

Clarenbach, Max, Düsseldorf-Obercassel  
Germany; born, Neuss, near Düsseldorf.  
Member of the Künstlerbund, the Aus-  
stellerverband, and of the Sonderbund,  
Düsseldorf. Represented in the Albright  
Gallery, Buffalo; National Gallery, Ber-  
lin; and in collections in Düsseldorf,  
Bonn, Essen, Strassburg, Cologne, Bar-  
men, and Elberfeld. Silver Medals; Grez  
and Salzburg; Gold Medal, Vienna,  
1903; Gold Medal, Düsseldorf, 1907

53—Hoar Frost and Fog

Claus, Émile, Astene, Belgium; born, Vi-  
ve-Saint-Eloi, Belgium. Member of the  
Société Nationale des Beaux-Arts, Paris,



Emil Claus

and of the Secession Society, Berlin. Represented in the Luxembourg, Paris; Museums of Dresden, Berlin, Venice, Brussels, and Antwerp. Gold Medal, Exposition Universelle, Paris, 1889; Gold Medal, Exposition Universelle, Paris, 1900; Officer of the Order of St. Michael of Bavaria, and of the Order of Leopold; Knight of the Legion of Honor, France, and of the Order of Orange-Nassau

54—Fields after Harvest

Coman, Charlotte B., New York, New York; born, Waterville, New York. Member of the New York Water Color Club; Woman's Art Club, New York. Represented in the National Art Gallery, Washington, D. C. Bronze Medal, San Francisco, California, 1894; Shaw Memorial Prize, Society of American Artists, 1905; Second Prize, Society of Washington (D. C.) Artists, 1906; Bur-



Charlotte B. Coman

gess Prize, New York Woman's Art  
Club, 1907

55—Late October

Cope, Arthur Stockdale, London, England.  
Associate of the Royal Academy of Arts,  
London; Honorary Member of the So-  
ciété des Artistes Français, Paris. Hon-  
orable Mention, Salon, Paris, 1892; Gold  
Medal, Salon, Paris, 1902; Médaille Rosa  
Bonheur

56—Portrait of Mrs. Forster

Costa, John da, New York, New York.  
Member of the Royal Institute of Oil  
Painters, London; New Society of Por-  
trait Painters, London; The Pastel Soci-  
ety, London. Represented in collections  
in Leeds and Yorkshire, England.  
Medal of the third class, Salon, Paris,  
1907

57—Portrait of Mrs. Evans Rogers Dick

**Cottet, Charles, Paris, France;** born, Puy, France. Member of the Société Nationale des Beaux-Arts, Paris; Secession Society, Vienna; Secession Society, Berlin; International Society of Sculptors, Painters and Gravers, London. Represented in the Luxembourg, Paris, and in the Museums of Lille, Venice, Trieste, Antwerp, Karlsruhe, Brussels, Bordeaux, Helsingfors, St. Etienne, Vienna, and Barcelona. Knight of the Legion of Honor, France, 1900; Gold Medal, Exposition Universelle, Paris, 1900; Gold Medal, International Exposition, Munich, 1905

58—Girl with Rose Hat\*

59—View of Venice\*



Charles Cottet



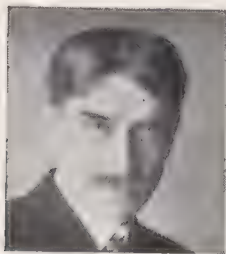
CHARLES COTTET

58—Girl with Rose Hat



Crane, Bruce, New York, New York; born, New York. Member of the National Academy of Design, Society of Landscape Painters, American Water Color Society, New York Water Color Club, New York. Represented in the Metropolitan Museum of Art, New York; Brooklyn Institute of Arts and Sciences; Peabody Library, Baltimore; Carnegie Institute, Pittsburgh. Webb Prize, Society of American Artists, 1897; Bronze Medal, Exposition Universelle, Paris, 1900; Inness Gold Medal, National Academy of Design, 1901; Silver Medal, Pan-American Exposition, Buffalo, 1901; Silver Medal, Charleston Exposition, 1902; Gold Medal, Universal Exposition, St. Louis, 1904; Medal of the third class, Carnegie Institute, 1909

60—Fields and Hills



Bruce Crane

Daingerfield, Elliott, New York, New York; born, Harper's Ferry, Virginia. Member of the National Academy of Design, New York, and of the New York Municipal Art Society. Represented in the National Gallery, Washington, D. C.; Brooklyn Institute of Arts and Sciences; Metropolitan Museum of Art, New York. Silver Medal, Pan-American Exposition, Buffalo, 1901; Clarke Prize, National Academy of Design, 1902

61—Autumn

Dauchez, André, Paris, France; born, Paris. Member of the Société Nationale des Beaux-Arts, and of the Société Nouvelle de Peintres et Sculpteurs, Paris. Represented in the Luxembourg, Paris;



Elliott Daingerfield

Carnegie Institute; and in collections in Philadelphia, Helsingfors, Bergen, Budapest, Lille, Nantes, and Hâvre. Medal of the third class, Carnegie Institute, 1899; Medal of the first class, Carnegie Institute, 1900; Silver Medal, Exposition Universelle, Paris, 1900; Second Gold Medal, International Exposition, Munich, 1901

62—The Mill by the Sea

**Davis**, Charles H., Mystic, Connecticut; born, Amesbury, Massachusetts. Member of the National Academy of Design, New York. Represented in the Pennsylvania Academy of the Fine Arts, Philadelphia; Corcoran Gallery of Art, and National Gallery, Washington, D. C.; Metropolitan Museum of Art, New York; Art Institute, Chicago; Wadsworth Athenaeum, Hartford; Art Gallery, Omaha; Art Museum, Worcester,



André Dauchez

Massachusetts. Honorable Mention, Salon, Paris, 1887; Silver Medal, Exposition Universelle, Paris, 1889; Palmer Prize, Art Institute of Chicago, 1890; Medal, Massachusetts Charitable Mechanics Association, Boston, 1890; Medal, Columbian Exposition, Chicago, 1893; Grand Gold Medal, Atlanta Exposition, 1895; Gold Medal, American Art Association, New York, 1896; Bronze Medal, Exposition Universelle, Paris, 1900; Lippincott Prize, Pennsylvania Academy of the Fine Arts, Philadelphia, 1901; Silver Medal, Pan-American Exposition, Buffalo, 1901; Silver Medal, Universal Exposition, St. Louis, 1904

63—The Quarries; Late Afternoon\*

64—In April\*

Davol, Joseph Benjamin, Ogunquit, Maine  
65—The Drift, Moonlight



Charles H. Davis



CHARLES H. DAVIS

64—In April



Dearth, Henry Golden, New York, New York; born, Bristol, Rhode Island. Associate of the National Academy of Design, New York. Webb Prize, Society of American Artists, 1893; Bronze Medal, Exposition Universelle, Paris, 1900; Silver Medal, Pan-American Exposition, Buffalo, 1901; Silver Medal, Charleston Exposition, 1902

66—The Birches

D'Espagnat, Georges, Paris, France; born, Melun, France

67—The Scolding\*

Dessar, Louis Paul, New York, New York; born, Indianapolis, Indiana. Associate Member of the National Academy of Design, New York. Medal of



Georges D'Espagnat

the third class, Salon, Paris, 1891; Medal, Columbian Exposition, Chicago, 1893; Honorable Mention, Carnegie Institute, 1897; Second Hallgarten Prize, National Academy of Design, 1899; First Hallgarten Prize, National Academy of Design, 1900; Bronze Medal, Exposition Universelle, Paris, 1900; Silver Medal, Pan-American Exposition, Buffalo, 1901; Silver Medal, Charleston Exposition, 1902

68—Spring; Marvin's Woods

De Voll, F. Usher, Providence, Rhode Island

69—The White City

Dougherty, Paul, New York, New York; born, Brooklyn, New York. Member of the National Academy of



F. Usher De Voll

Design and of the National Institute of Arts and Letters, New York. Represented in the Corcoran Gallery of Art, Washington, D. C.; Brooklyn Institute of Arts and Sciences; Art Institute, Chicago; Art Gallery of Fort Worth, Texas

70—Flood Tide\*

Dufner, Edward, New York, New York; born, Buffalo, New York. Member of the American Art Association, Paris; American Water Color Society, and New York Water Color Club, New York. Represented in the Albright Art Gallery, Buffalo. First Wanamaker Prize, American Art Association, Paris, 1899; Bronze Medal, Pan-American Exposition, Buffalo, 1901; Honorable Mention, Salon, Paris, 1902; Silver Medal, Universal Exposition, St. Louis, 1904;



Paul Dougherty

Fellowship Prize, Buffalo Society of Artists, 1904; William T. Evans Prize, American Water Color Society, New York, 1909

71—Evening

Duveneck, Frank, Cincinnati, Ohio; born, Covington, Kentucky. Member of the National Academy of Design, New York; Society of Western Artists; Cincinnati Art Club; National Institute of Arts and Letters. Medal, Columbian Exposition, Chicago, 1893; Honorable Mention, Salon, Paris, 1895; Silver Medal, Pan-American Exposition, Buffalo, 1901

72—Portrait of John W. Alexander\*

East, Alfred, London, England. President of the Royal Society of British Artists, London; Associate of the Royal Academy, London; Honorary Associate of the Royal Institute of British Architects,



Edward Dufner



FRANK DUVENECK

72—Portrait of John W. Alexander



London; Member of the Royal Society of Painter-Etchers and Engravers, London, and of the Société des Eau-fortes en Couleur, Paris; Honorary Member of the Société Royal des Aquarellets de Belge, Société Nationale des Beaux-Arts, Paris, and of the Neiji Bijutsu Kai, Japan. Represented in the Luxembourg, Paris; Victoria and Albert Museum, London; National Gallery of Hungary; Permanent Gallery, Venice; National Gallery, Brussels; Carnegie Institute; municipal galleries, Manchester, Liverpool, Birmingham, Leeds, Preston, Hull, and Oldham. Gold Medal, Exposition Universelle, Paris, 1889; Medal of the second class, Munich, 1891; Medal, Columbian Exposition, Chicago, 1893; Medal of the second class, Exposition Universelle, Paris, 1900; Medal, Barcelona, 1907

73—Sunshine after Rain\*

74—An English Manor

75—In the Cotswolds\*



Alfred East

**Eakins, Thomas**, Philadelphia, Pennsylvania; born, Philadelphia. Member of the National Academy of Design, New York. Represented in the Metropolitan Museum of Art, New York; Pennsylvania Academy of the Fine Arts, Philadelphia. Medal, Columbian Exposition, Chicago, 1893; Honorable Mention, Exposition Universelle, Paris, 1900; Gold Medal, Pan-American Exposition, Buffalo, 1901; Gold Medal, Universal Exposition, St. Louis, 1904; Temple Gold Medal, Pennsylvania Academy of the Fine Arts, Philadelphia, 1904; Proctor Prize, National Academy of Design, New York, 1905; Medal of the second class, Carnegie Institute, 1907

76—Portrait of Edward A. Schmidt



Thomas Eakins



ALFRED EAST

74—An English Manor



Ebert, Charles H., Greenwich, Connecticut

77—The Spectral Fog

78—The Fisherman's Hut

Emmet, Ellen G., New York, New York. Represented in the Metropolitan Museum of Art, New York. Silver Medal, Universal Exposition, St. Louis, 1904

79—In the Studio

Enneking, John J., Boston, Massachusetts; born, Minster, Ohio. Member of the Boston Art Club and of the Paint and Clay Club, Boston. Represented in the Boston Art Club and in the Art Mu-



Charles H. Ebert

seum, Worcester, Massachusetts. Honorable Mention, Exposition Universelle, Paris, 1900; Silver Medal, Pan-American Exposition, Buffalo, 1901

80—Grey Day in the Mountains, Berkshire Hills

Fechin, Nicholas, Kasan, Russia. Represented in the Museum of the Académie des Beaux-Arts, St. Petersburg. Medals: Académie des Beaux-Arts, and Société des Beaux-Arts, St. Petersburg; Gold Medal, Munich

81—Portrait of Mlle. Lapojnikoff

82—Portrait of my Father

Fergusson, John Duncan, Paris, France. Member of the Salon d'Automne, Paris, and of the Royal Society of British Artists, London

83—The Chinese Mantle

84—The Red Shawl



Ellen G. Emmet



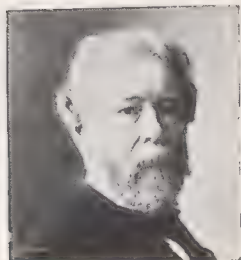
NICOLAS FECHIN

81—Portrait of Mlle. Lapojnikoff



Forbes, Stanhope A., Higher Faugan, Newlyn, Penzance, England; born, Dublin, Ireland. Member of the Royal Academy of Arts, London; Corresponding Member of the Institute of France. Represented in the National Gallery of Modern Art, London; Walker Art Gallery, Liverpool; National Gallery, Melbourne, Australia; Corporation Art Galleries in Manchester, Birmingham, Oldham, Worcester, Plymouth, Brighton, and Exeter. Gold Medal, Exposition Universelle, Paris, 1889; Medal of the first class, Munich, 1891; Gold Medal, Exposition Universelle, Paris, 1900; Honorable Mention, Carnegie Institute, 1909

85—February Sunshine



John J. Enneking

**Foster, Ben, New York, New York;** born, North Anson, Maine. Member of the National Academy of Design, New York. Represented in the Luxembourg, Paris; Art Association, Montreal; Brooklyn Institute of Arts and Sciences; Corcoran Gallery of Art, and in the William T. Evans Collection, National Gallery of Art, Washington, D. C.; Pennsylvania Academy of the Fine Arts, Philadelphia. Bronze Medal, Columbian Exposition, Chicago, 1893; Second Prize, Cleveland, 1895; Bronze Medal, Exposition Universelle, Paris, 1900; Medal of the second class, Carnegie Institute, 1900; Silver Medal, Pan-American Exposition, Buffalo, 1901; Webb Prize, Society of American Artists, 1901; Silver Medal, Universal Exposition, St. Louis, 1904; Carnegie Prize, National Academy of



Ben Foster



STANHOPE A. FORBES

85—February. Sunshine



Design, New York, 1906; Inness Gold Medal, National Academy of Design, 1909

86—Summer Night

Franzen, August, New York, New York; born, Norrköping, Sweden. Associate of the National Academy of Design, New York. Medal, Columbian Exposition, Chicago, 1893; Bronze Medal, Paris Exposition, 1900; Honorable Mention, Pan-American Exposition, Buffalo, 1901; Gold Medal, American Art Society, New York, 1902

87—Portrait of the Honorable A. T. Clearwater

Frieseke, Frederick Carl, Paris, France; born, Owosso, Michigan. Member of the Société Nationale des Beaux-Arts, Society of American Artists, and of the Société Internationale, Paris. Represented



Frederick Carl Frieseke

in the Luxembourg, Paris, and in galleries of modern art in Venice and Odessa. Gold Medal, International Exhibition, Munich, 1904; Silver Medal, Universal Exposition, St. Louis, 1904; Fourth W. A. Clarke Prize, Corcoran Gallery of Art, 1908

88—The Green Boat

Fursman, Frederick Frary, Chicago, Illinois

89—In the Garden

Garber, Daniel, Lumberville, Pennsylvania. Fellowship of the Pennsylvania Academy of the Fine Arts, Philadelphia. First Toppan Prize, Pennsylvania Academy of the Fine Arts, 1903; First Hallgarten Prize, National Academy of Design, 1909; Honorable Mention, Art Club of Philadelphia, 1910

90—Horses

91—Hills of Byram

*Awarded Honorable Mention,  
Carnegie Institute, 1910*



DANIEL GARBER

91—Hills of Byram.  
Institute, 1910

Awarded Honorable Mention, Carnegie



Genth, Lillian Matilde, Philadelphia, Pennsylvania; born, Philadelphia. Fellowship of the Pennsylvania Academy of the Fine Arts, Philadelphia; Associate of the National Academy of Design, New York. Represented in the Carnegie Institute; Cremer Collection, Dortmund, Germany; Art Club of Philadelphia; National Gallery, Washington, D. C.; Brooklyn Institute of Arts and Sciences; Mary Smith Prize, Pennsylvania Academy of the Fine Arts, Philadelphia, 1904; Shaw Memorial Prize, National Academy of Design, New York, 1908

92—The Balcony

93—Reflections



Lillian Matilde Genth

Gilchrist, Jr., W. W., Philadelphia, Pennsylvania. Member of the Art Club of Philadelphia. Represented in the Cincinnati Museum of Art. Hallgarten Prize, National Academy of Design, New York, 1908

94—A Study in Lavender

Gilsoul, Victor, Brussels, Belgium. Member of the Société des Beaux-Arts, Brussels. Represented in the Luxembourg, Paris, and in collections in Brussels, Antwerp, and Crefeld. Gold Medals: Munich, 1897, Barcelona; Silver Medals: Paris, Brussels; Medal of Honor, Bordeaux

95—Village Square at Brabançon

Gorson, A. H., Pittsburgh, Pennsylvania  
96—Pittsburgh Nocturne

**Granville-Smith, W.**, New York, New York; born, Granville, New York. Associate of the National Academy of Design, New York; Member of the American Water Color Society, New York. Third Hallgarten Prize, National Academy of Design, 1900; Bronze Medal, Charleston Exposition, 1902; Evans Prize, American Water Color Society, 1905; First Prize, Worcester Art Museum, 1906; Honorable Mention, Carnegie Institute, 1907; Inness Gold Medal, National Academy of Design, 1908

97—The Willows

**Grassel, Franz**, Munich, Germany. Member of the Allem. Deutsche Kunstergemeinschaft. Represented in the Na-



W. Granville-Smith

tional Gallery, Berlin; Pinakothek, Munich; Art Gallery, Glasgow; and in collections in Freiburg and Nuremberg. Silver Medal, Munich Academy; Medal of the second class, Munich, 1897; Silver Medal, Salzburg, 1903; Medal of the first class, Munich, 1909

98—White Ducks on the Water\*

**Greiffenhagen, Maurice**, London, England. Represented in the Walker Art Gallery, Liverpool, England; National Art Gallery, Sidney, New South Wales; Carnegie Institute, Pittsburgh; in a collection in Ghent, Belgium. Gold Medal, International Exposition, Munich, 1897, Gold Medal, Dresden, 1901; Honorable Mention, Carnegie Institute, 1907

99—The Beggar Maid

100—A Portrait in Brown



Franz Grüssel

Groll, Albert L., New York, New York; born, New York. Associate of the National Academy of Design, New York. Represented in the Corcoran Gallery of Art, Washington, D. C. Silver Medal, Universal Exposition, St. Louis, 1904; Gold Medal, Pennsylvania Academy of the Fine Arts, Philadelphia, 1906

101—Navajo Desert, Arizona

Guiguet, François, Paris, France; born, Corbelin, France. Member of the Société Nationale des Beaux-Arts, Paris. Represented in the Luxembourg, Paris, and in museums at St. Etienne and at Grenoble. Bronze Medal, Exposition Universelle, Paris, 1900

102—Child Standing Near a Door (Timidity)



Maurice Greiffenhagen

Guthrie, Sir James, Edinburgh, Scotland.  
Member of the National Gallery of Scotland;  
Société Nationale des Beaux-Arts, Paris; Honorary Member of Royal Academies of Saxony and Bavaria;  
Royal Hibernian Academy; Royal Institute of Oil Painters, London

103—Mrs. John R. Findlay\*

Hacke, Ida, Munich, Germany  
104—Still Life

Hailman, Johanna K., Pittsburgh, Pennsylvania; born, Pittsburgh  
105—Pittsburgh Blast Furnace: Soho Number One

Halford, C. H., London, England  
106—Wandering Minstrels



Albert L. Groll

**HAMILTON, J. McLure**, London, England; born, Philadelphia, Pennsylvania. Honorary Member, Philadelphia Water Color Club; Fellowship of the Pennsylvania Academy of the Fine Arts, Philadelphia. Honorable Mention, Salon, Paris, 1892; Gold Medal, Pan-American Exposition, Buffalo, 1901; Gold Medal, Universal Exposition, St. Louis, 1904

107—Portrait of Dr. S. Weir Mitchell\*

108—Portrait of Joseph Pennell\*

**HARRISON, Alexander**, Paris, France; born, Philadelphia, Pennsylvania. Member of the Société Nationale des Beaux-Arts, Paris; Secession Society, Berlin; Secession Society, Munich; National Academy of Design, and of the National Institute of Arts and Letters, New York. Represented in the Luxembourg, Paris;



J. McLure Hamilton

Royal Gallery, Dresden, National Museum, Budapest; Museum of Fine Arts, St. Louis; Corcoran Gallery of Art, Washington, D. C.; Pennsylvania Academy of the Fine Arts, Philadelphia; Chicago Art Institute; Memorial Hall Museum, Philadelphia; and in collections in Buenos Ayres, Berlin, Ghent, and Bruges, Honorable Mention, Salon, Paris, 1885; Temple Silver Medal, Pennsylvania Academy of the Fine Arts, 1887; Gold Medal, Exposition Universelle, Paris, 1889; Medal of the second class, Munich, 1891; Medal of Honor, Pennsylvania Academy of the Fine Arts, 1894; Medal of Honor, Vienna; Officer of the Legion of Honor, France, 1891; Officier de l'Instruction Publique, Paris

109—Cliffs, Tréport

110—Behind Tréport



Alexander Harrison

**Harrison, Birge**, Bearsville, New York; born, Philadelphia, Pennsylvania. Fellowship of the Pennsylvania Academy of the Fine Arts, Philadelphia; Associate of the National Academy of Design; Member of the National Institute of Arts and Letters, New York. Represented in the Art Institute of Chicago; St. Louis Museum of Art; Pennsylvania Academy of the Fine Arts; Museums in Marseilles and Nantes; Collections in Spartansburg, South Carolina, and Oakland, California. Silver Medal, Exposition Universelle, Paris, 1889; Medal, Columbian Exposition, Chicago, 1893; Bronze Medal, Pan-American Exposition, Buffalo, 1901; Second Corcoran Prize, Society of Washington Artists, 1904; Silver Medal, Universal Exposition, St. Louis, 1904; H. C., Salon, Paris

111—The Old Saw-mill

112—The Frozen Stream



Birge Harrison

Hassam, Childe, New York, New York; born, Boston, Massachusetts. Member of the Ten American Painters, National Academy of Design, American Water Color Society, and New York Water Color Club, New York; Associate of the Société Nationale des Beaux-Arts, Paris; Corresponding Member of the Secession Society, Munich. Represented in the Boston Art Club, Boston; Metropolitan Museum of Art, New York; Albright Art Gallery, Buffalo; John Heron Art Institute, Indianapolis; Telfair Academy of Arts and Sciences, Savannah, Georgia; Cincinnati Art Museum; Rhode Island School of Design, Providence, Rhode Island; Worcester Art Museum, Worcester, Massachusetts; Art Club of Erie, Erie, Pennsylvania; Portland Art Association, Portland, Oregon; Corcoran Gallery of Art, Washington, D. C.; National Gallery,



Childe Hassam



CHILDE HASSAM

116—Gloucester Inner Harbor



Washington, D. C.; Muncie Art Association, Muncie, Indiana; Hillyer Art Gallery, Smith College, Northampton, Massachusetts; Walters Gallery, Baltimore; Carnegie Institute; Pennsylvania Academy of the Fine Arts, Philadelphia; Charles L. Freer Collection. Medal of the third class, Exposition Universelle, Paris, 1889; Gold Medal, Munich, 1892; Gold Medal, Art Club of Philadelphia, 1892; Medal, Columbian Exposition, Chicago, 1893; Prize, Cleveland Art Association, 1893; Webb Prize, Society of American Artists, 1895; Prize, Boston Art Club, 1896; Medal of the second class, Carnegie Institute, 1898; Temple Gold Medal, Pennsylvania Academy of the Fine Arts, Philadelphia, 1899; Silver Medal, Exposition Universelle, Paris, 1900; Gold Medal, Pan-American Exposition, Buffalo, 1901; Gold Medal, Universal Exposition, St. Louis, 1904; Medal

of the third class, Carnegie Institute, 1905; Thomas B. Clarke Prize, National Academy of Design, 1905; Carnegie Prize, Society of American Artists, 1906; Walter Lippincott Prize, Pennsylvania Academy of the Fine Arts, 1906; Sessan Gold Medal, Pennsylvania Academy of the Fine Arts, 1910

- 113—Ecola\*
- 114—Isles of Shoals\*
- 115—Winter Nightfall in the City\*
- 116—Gloucester Inner Harbor\*
- 117—Isles of Shoals\*
- 118—The Mulberry Tree\*
- 119—Brooklyn Bridge\*
- 120—Fifth Avenue\*
- 121—Bornero Hill\*
- 122—The Old Elm\*
- 123—Paris; Winter Day\*
- 124—Village of Old Lyme\*
- 125—Cat Boats, Newport\*
- 126—Mt. Hood from Portland, Oregon\*



CHILDE HASSAM

119—Brooklyn Bridge



- 127—Plaza Centrale and Fort Cabanas, Havana\*
- 128—Sunlight through the Leaves\*
- 129—The Cider Jugs\*
- 130—Across the Park\*
- 131—Morning in the Desert\*
- 132—October\*
- 133—Entrance to the Siren's Grotto, Isle of Shoals\*
- 134—Northeast Headlands\*
- 135—Spring, Navesink Highlands\*
- 136—Cliffe Rock, Appledore\*
- 137—Sylph's Rock, Appledore\*
- 138—The Messenger Boy\*
- 139—Sunrise in the Desert\*
- 140—Afternoon Sky; Harney Desert\*
- 141—Portrait of Mrs. David T. Honeyman\*
- 142—Portrait of Liza\*
- 143—Malheur Butte\*
- 144—Evening, Appledore\*
- 145—Pont Royal\*
- 146—Northeast Headlands, Appledore\*
- 147—The Bather\*

148—The Mist\*

149—The Blue Sea and the Bather\*

150—Ironbound\*

**Hawthorne, Charles W.,** New York, New York; born, Illinois. Member of the National Academy of Design, New York. Represented in the Worcester Museum, and in the Rhode Island School of Design. First Hallgarten Prize, National Academy of Design, 1904; Second Prize, Worcester Art Museum, 1904; Second Hallgarten Prize, National Academy of Design, 1906

151—Return with the Catch

**Heider, Hans,** Munich, Germany. Member of the Luitpold Association, Munich

152—Landscape



Charles W. Hawthorne



CHARLES W. HAWTHORNE

151—Return with the Catch



[Henri, Robert, New York, New York; born, Cincinnati, Ohio. Member of the Society of American Artists, National Academy of Design, and of the National Institute of Arts and Letters, New York; Fellowship of the Pennsylvania Academy of the Fine Arts, Philadelphia. Represented in the Luxembourg, Paris; Picture purchased by the Carnegie Institute, Pittsburgh; Gallery of Art Association of Texas, Dallas, Texas; Columbus Gallery of the Fine Arts, Columbus, Ohio; Gallery of Art Association of New Orleans; Permanent Collection of the City of Spartansburg, South Carolina. Silver Medal, Pan-American Exposition, Buffalo, 1901; Silver Medal, Universal Exposition, St. Louis, 1904; Harris Prize, Art Institute of Chicago, 1905; Gold Medal, Art Club of Philadelphia

153—Portrait

154—Portrait



Robert Henri

Hildebrandt, Howard Logan, New York, New York; born, Allegheny, Pennsylvania. Member of the American Water Color Society, New York. Represented in the John Herron Art Institute, Indianapolis. Evans Prize, American Water Color Society, 1906

155—Connecticut Landscape

Hopkinson, Charles, Boston, Massachusetts; born, Cambridge, Massachusetts. Bronze Medal, Pan-American Exposition, Buffalo, 1901; Bronze Medal, Universal Exposition, St. Louis, 1904; Second Prize, Worcester Art Museum, 1902 and 1905

156—Arranging Flowers



Charles Hopkinson



ROBERT HENRI

153—Portrait



**Hornel, E. A.**, Kirkcudbright, Scotland; born, Baccus Marsh, Australia. Member of the International Society of Sculptors, Painters and Gravers, Society of Twenty-five Painters, Royal British-Colonial Society of Artists, London, and of the Royal Glasgow Institute. Represented in collections in St. Louis, Buffalo, Toronto, Adelaide, Glasgow, Liverpool, Leeds, Manchester, Bradford, Hull, Bath, Brighouse, Rochdale, Bury, Huddersfield, and in the Modern Arts Association of Scotland. Honorable Mention, Carnegie Institute, 1909

157—The Chase

**How, Beatrice**, Paris, France. Associate Member, Société Nationale des Beaux-Arts, Paris. Represented in the National Collection, Paris. Medal of the third class, Orleans, 1905

158—Baby Asleep

159—An Old Man at Volendam



E. A. Hornel

**Hughes-Stanton, H.**, London, England.

Associate of the Royal Society of Painters in Water Colours, London; Member of the Royal Institute of Oil Painters, and of the Pastel Society, London. Represented in the Chantrey Bequest Collection, Tate Gallery, London; Luxembourg, Paris; and in corporation galleries at Liverpool, Bradford, Brighton, and Aberdeen. H. C., Salon, Paris; Gold Medal, Salon, Paris, 1907; Gold Medal, Salon, Paris, 1908

160—The Picnic, Pas de Calais, France

161—Noon, Avignon, France

**Hurley, Edward Timothy**, Newport, Kentucky; born, Cincinnati, Ohio. Member of the Society of Western Artists; Cincinnati Art Club

162—The New Year



Edward Timothy Hurley



E. A. HORNEL  
157—The Chase



Huys, Modest, Wareghem, Flanders, Belgium

163—Village Festival in Flanders

164—A Little Corner in a Village Festival

Jeannot, Pierre-Georges, Paris, France; born, Geneva, Switzerland. Member of the Société National des Beaux-Arts, Paris; Royal Society of Painter-Etchers, London; Secession Society, Vienna; Secession Society, Berlin; Secession Society, Munich. Represented in the Luxembourg, Paris, and in the museums of Christiania, Nancy, and Pau. Honorable Mention, Salon, Paris, 1882; Medal of the third class, Salon, Paris, 1884; Silver Medal, Exposition Universelle, Paris, 1900; H. C., Salon, Paris; Knight of the Legion of Honor, France

165—The Green Dress

John, Augustus, London, England.  
166—Portrait of William Nicholson

Kampf, Arthur, Berlin, Germany; born, Aachen, Germany. Member of the Royal Academy, Berlin, and of the Royal Academy, Dresden. Represented in the National Gallery, Berlin; and in the Museums of Munich, Dresden, Leipzig, Karlsruhe, Düsseldorf, and Magdeburg. Medal of the second class, Munich, 1890; Medals: Berlin, Paris, Barcelona, Dresden, Salzburg, and Vienna, 1892; Honorable Mention, Carnegie Institute, 1908

167—The Fortune Teller

168—Behind the Scenes

Keller, H. G., Cleveland, Ohio; born, Cleveland. Silver Medal, Munich, 1902  
169—Disturbed



Arthur Kampf

Kendall, William Sergeant, New York, New York; born, Spuyten Duyvil, New York. Member of the National Academy of Design, New York. Represented in the Corcoran Gallery of Art, Washington, D. C.; Metropolitan Museum of Art, New York; Pennsylvania Academy of the Fine Arts, Philadelphia. Honorable Mention, Salon, Paris, 1891; Medal, Columbian Exposition, Chicago, 1893; Lippincott Prize, Pennsylvania Academy of the Fine Arts, 1894; Tennessee Centennial Exposition, Nashville, 1897; Second Prize, Worcester Art Museum, 1900; Bronze Medal, Exposition Universelle, Paris, 1900; Medal of the third class, Carnegie Institute, 1900; Second Prize, Worcester Art Museum, 1901; Silver and Bronze Medals and Honorable Mention, Pan-American Exposition, Buffalo, 1901; Shaw Prize, Society of American Artists, 1901; Shaw Prize, So-

ciety of American Artists, 1903; Gold Medal, Universal Exposition, St. Louis, 1904; Isidor Memorial Medal, National Academy of Design, 1908

170—Alison

171—On Narrow River

**Kníght, Laura, Newlyn, Cornwall, England.** Associate of the Royal Water Colour Society, London. Represented in collections in New Zealand, Rochdale, and Brighton

172—Boys Bathing

**Koehler, Robert, Minneapolis, Minnesota;** born, Hamburg, Germany. Honorary Member of the Minnesota State Art Society; Member of the Minneapolis Society of Fine Arts, and of the Minneapolis Artists' League. Represented in the Pennsylvania Academy of the Fine Arts,

Philadelphia; Public Library, Minneapolis; Commercial Club, Minneapolis. Bronze and Silver Medals, Munich Academy; Honorable Mention, Paris, 1889; Knight of the Order of St. Michael of Bavaria

173—Winter View of the "Radisson"

Krijitzki, Constantin, St. Petersburg, Russia. Member of the Academie des Beaux-Arts, St. Petersburg. Represented in the Academie des Beaux-Arts, and in the Museum of the Emperor Alexander III, St. Petersburg. Medal of the second class, International Exposition, Munich, 1909

174—Winter Morning

Langley, Walter, Penzance, England. Member of the Royal Institute of Painters in Water Colours, and of the Royal British-Colonial Society of Artists, London. Represented in collections in Liverpool, Leeds, Hull, and Birmingham

175—The Fisherman's Widow

La Thangue, H. H., Graffham, Petworth, Sussex, England. Associate of the Royal Academy of Arts, London. Represented in the Chantrey Bequest Collection, Tate Gallery, London; City Art Gallery, Manchester; City Art Gallery, Liverpool; corporation art galleries and museums in Oldham, Bradford, and Nottingham, England; Art Gallery and Industrial Museum Aberdeen; Glasgow Art Gallery and Museum, Scotland; Western Australian Museum and Art Gallery; National Art Gallery of New South Wales. Silver Medal, Exposition Universelle, Paris, 1900

176—Ligurian Grapes

La Touche, Gaston, St. Cloud, France; born, St. Cloud. Member of the Société des Artistes Français, Société Nationale des Beaux-Arts, and of the Société Inter-



H. H. La Thangue



GASTON LA TOUCHE

178—Italian Comedians



nationale de la Peinture à l'Eau, Paris. Represented in the Luxembourg, Paris. Medal of the first class, Salon, Paris, 1884; Medal of the second class, Salon, Paris, 1888; Silver Medal, Exposition Universelle, Paris, 1900; Officer of the Legion of Honor, France, 1900; Medal of the second class, International Exposition, Munich, 1901; Grand Prize, International Exposition, Venice, 1903; Medal of the first class, Carnegie Institute, 1907; H. C., Salon, Paris

177—The Bridge des Arts

178—Italian Comedians

Leader, B. Eastlake, Gomshall, Guildford, England

179—A Moonlit Common

Leigh, W. R., New York, New York; born, West Virginia. Honorable Mention, Salon, Paris, 1892; two Silver and three Bronze Medals, Munich Academy

180—Loitering



Gaston La Touche

Lerolle, Henry, Paris, France; born, Paris. Member of the Société Nationale des Beaux-Arts, Paris. Represented in the Luxembourg, Paris. Medal of the third class, Salon, Paris, 1879; Medal of the first class, Salon, Paris, 1880; Knight of the Legion of Honor, France, 1889; Gold Medal, Exposition Universelle, Paris, 1900

181—Young Girl With Flowers

Le Sidaner, Henri Eugène, Paris, France; born, L'île Maurice, France. Member of the Société Nationale des Beaux-Arts, Paris, and of the International Society of Sculptors, Painters and Gravers, London. Represented in the Luxembourg and Petit Palais, Paris; Museums of Douai, Pau, and Dunkerque, France; Dublin, Belfast, Ghent, and Buenos Ayres. Medal of the third class,



Henry Lerolle



HENRI EUGÈNE LE SIDANER

182—Houses on the Canal, Bruges



Paris, 1891; Bronze Medal, Exposition Universelle, Paris, 1900; Gold Medal, Munich, 1901; Honorable Mention, Carnegie Institute, 1901; Medal of the second class, Carnegie Institute, 1908

182—Houses on the Canal, Bruges\*

183—The Table in the Moonlight\*

Lever, R. Hayley, St. Ives, Cornwall, England. Member of the Royal Society of British Artists, London. Represented in Adelaide Art Gallery, South Australia  
184—Port of St. Ives, Cornwall

Lindner, Moffat P., St. Ives, Cornwall, England; born, England. Member of the Institute of Oil Painters, of the Royal Institute of Painters in Water Colours, and of the Royal British-Colonial Society



Henri Eugène Le Sidaner

of Artists, London. Represented in the Corporation Art Gallery and Museum, Bradford; Corporation Art Gallery, Hull; Walker Art Gallery, Liverpool; New Zealand Academy of Fine Arts, Wellington, New Zealand. Medal, South African International Exposition, 1893; Bronze Medal, Exposition Universelle, Paris, 1900

185—The Approach to Amsterdam: Sunset

Little, Philip, Salem, Massachusetts. Represented in the Pennsylvania Academy of the Fine Arts, Philadelphia; Collection of Society of Fine Arts, Minneapolis, Minnesota

186—The Glory of October



Moffat P. Lindner

Lockwood, Wilton, Boston, Massachusetts; born, Wilton, Connecticut. Associate of the National Academy of Design, New York. Represented in Carnegie Institute; Corcoran Gallery of Art, Washington, D. C.; Worcester Art Museum; Boston Museum of Fine Arts. Honorable Mention, Carnegie Institute, 1897; Temple Gold Medal, Pennsylvania Academy of the Fine Arts, Philadelphia, 1898; Silver Medal, Exposition Universelle, Paris, 1900; Silver Medal, Pan-American Exposition, Buffalo, 1901; Silver Medal, Universal Exposition, St. Louis, 1904

187—Portrait of Mrs. Frederick Law Olmstead

188—Dr. John W. Elliot

Loiseau, Gustave, Paris, France; born, Paris

189—The Banks of the Eure\*



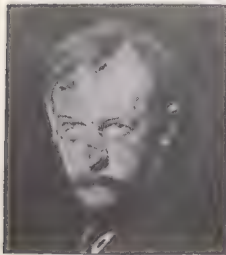
Philip Little

Lomont, Eugène, Haute-Saône, France.  
Member of the Société Nationale des  
Beaux-Arts, Paris. Represented in the  
Luxembourg, Paris. Medal of the third  
class, Société des Artistes Français;  
Medal of the second class, Exposition  
Universelle, Paris, 1900

190—Woman in Blue

Lorimer, John Henry, Edinburgh, Scot-  
land; born, Edinburgh. Corresponding  
Member of the Institute of France.  
Member of the Royal Scottish Acad-  
emy; Society of Portrait Painters. As-  
sociate of the Royal Society of Painters  
in Water Colours. Represented in the  
Luxembourg, Paris; the National Gal-  
lery of Scotland; and in collections in  
Rochdale, Glasgow, and Philadelphia  
Medal of the second class, Salon, Paris,  
1896; Medal of the third class, Salon,  
Paris, 1902; Gold Medal, Paris, 1900

191—Reverence to Midsummer's Eve\*



Wilton Lockwood

**Mac Cameron, Robert**, New York, New York; born, Chicago. Member of the Paris Society of American Artists. Represented in the Corcoran Gallery of Art, Washington, D. C., and in a collection at Philadelphia. Honorable Mention, Salon, Paris, 1904; Medal of the third class, Salon, Paris, 1906; Medal of the second class, Salon, Paris

192—Portrait of Mrs. John A. Burden\*

**Mann, Harrington**, London, England. Member of the Society of Portrait Painters, National Portrait Society, and of the International Society of Sculptors, Painters and Gravers, London. Represented in the National Gallery of Victoria, Melbourne, Australia, and in the Municipal Museum, Ghent, Belgium

193—Mr. John Stevenson, Jr.

194—Mrs. J. Horace Harding



Harrington Mann

Maufra, Maxime, Paris, France; born,  
Nantes, France

195—Low Tide: Afternoon at Hâvre\*

Melchers, Gari, New York, New York;  
born, Detroit, Michigan. Member of the  
National Academy of Design, New  
York; Société Nationale des Beaux-Arts,  
Paris; Royal Academy, Berlin; Interna-  
tional Society of Sculptors, Painters and  
Gravers, London; Secession Society,  
Munich; Secession Society, Vienna; So-  
ciety of American Artists, Paris. Repre-  
sented in the Royal Galleries of Dresden  
and Munich; Luxembourg, Paris; Car-  
negie Institute; National Gallery, Berlin;  
Pennsylvania Academy of the Fine Arts,  
Philadelphia; Art Institute of Chicago;  
Detroit Museum of Art; National Gal-  
lery, Rome. Honorable Mention, Salon,  
Paris, 1886; Medal of the first class, Am-  
sterdam, 1887; Medal of the third class,

Salon, Paris, 1888; Medal of the first class, Munich, 1888; Grand Prize, Paris, 1889; First Prize, Art Institute of Chicago, 1891; Medal of Honor, Berlin, 1891; Medal of Honor, Antwerp, 1894; Gold Medal, Pennsylvania Academy of the Fine Arts, 1896; Medal of the first class, Vienna, 1898; Medal of the first class, Dresden; Medal of the first class, Pan-American Exposition, Buffalo, 1901; Gold Medal, Universal Exposition, St. Louis, 1904; Officer of the Legion of Honor, France; Officer of the Order of the Red Eagle of Prussia; Officer of the Order of St. Michael of Bavaria

196—Portrait of Arthur T. Aldis\*

**Mesdag, Hendrik Willem**, The Hague, Holland; born, Groningen, Holland. President of Honor of the Pulchri Studio, The Hague; Member of the Holland



Hendrik Willem Mesdag

Teeken-Maatschappij, The Hague; *Arti et Amicitiae*, Amsterdam; *Société Nationale des Beaux-Arts*, Paris. Represented in the Luxembourg, Paris, and in collections in New York, Detroit, Munich, Budapest, Amsterdam, The Hague, Brussels, Rotterdam, Frankfort, and Düsseldorf. Medal of the third class, *Exposition Universelle*, Paris, 1878; Gold Medal, *Exposition Universelle*, Paris, 1889; Officer of the Legion of Honor, France, 1889; Gold Medal, *Exposition Universelle*, Paris, 1900. H. C., *Société des Artistes Français*; Commander of the Order of St. Michael of Bavaria, Leopold of Belgium, the Danebrog of Denmark, and of the Crown of Italy; Commander of the Order of Orange-Nassau; Commander of the Orders of the Lion of the Netherlands and of the White Falcon

197—Storm at the beach of Scheveningen\*

198—Evening on the Dutch Coast\*

Metcalfe, Willard L., New York, New York; born, Lowell, Massachusetts. Member of the Ten American Painters; American Water Color Society, New York; Institute of Arts and Letters. Represented in the Hillyer Art Gallery, Smith College, Northampton, Massachusetts; National Gallery, Washington, D.C.; Corcoran Gallery of Art, Washington, D. C.; Boston Art Museum; Pennsylvania Academy of the Fine Arts, Philadelphia; Cincinnati Art Museum; Worcester Art Museum; St. Botolph Club, Boston. Honorable Mention, Salon, Paris, 1888; Bronze Medal, Columbian Exposition, Chicago, 1893; Webb Prize, Society of American Artists, New York, 1896; Honorable Mention, Exposition Universelle, Paris, 1900; Silver Medal, Pan-American Exposition, Buffalo, 1901; Temple Gold Medal, Pennsylvania Academy of the Fine Arts, Philadelphia,

1907; First Prize and Corcoran Gold Medal, First Annual Exhibition, Corcoran Gallery of Art, Washington, D. C., 1907

199—The Silver Grove

200—Morning Shadows

201—May-time

**Meyner, Walter**, New York, New York  
202—Winter Glory

**Miller, Richard E.**, Paris, France. Represented in the Luxembourg, Paris; Musée de la Ville de Paris; and in collections at Antwerp, Belgium, and Venice. H. C., Paris Salon; Knight of the Legion of Honor, France

203—The Chinese Dress

**Molarsky, Morris**, Philadelphia, Pennsylvania. Fellowship Prize, Pennsylvania Academy of the Fine Arts; Honorable Mention, Philadelphia Art Club

204—Portrait of Young Woman in White



WILLARD F. METCALF

201—May Time



**Monet, Claude, Paris, France; born,  
Paris**

205—Charing Cross Bridge\*

206—Morning on a Branch of the Seine, near  
Giverny\*

**Moret, Henry; born, Cherbourg, France**

207—Harbor at Fortz-Guen (Finistère)\*

**Morrice, James Wilson, Paris, France;  
born, Montreal, Canada. Member of the  
Société National des Beaux-Arts, and of  
the Salon d'Automne, Paris; International  
Society of Sculptors, Painters and Grav-  
ers, London. Represented in the Lux-  
embourg, Paris; Pennsylvania Academy  
of the Fine Arts, Philadelphia; Palace of  
Arts, Lyons, France**

208—Quebec: Winter



Claude Monet

Muhrman, Henry, Meissen, Saxony, Germany; born, Cincinnati, Ohio. Member of the International Society of Sculptors, Painters and Gravers, London; Honorary Member of the Secession Society, Munich, and of the Secession Society, Berlin. Represented in the Pinakothek, Munich, and in the Glasgow and Dublin Art Galleries. Medal, Columbian Exposition, Chicago, 1893; Gold Medal, International Exhibition, Munich, 1897; Gold Medal, International Exhibition, Dresden, 1901; Gold Medal, Universal Exposition, St. Louis, 1904

209—Highgate\*

210—House and Autumn Foliage\*



James Wilson Morrice



J. FRANCIS MURPHY

214—Landscape



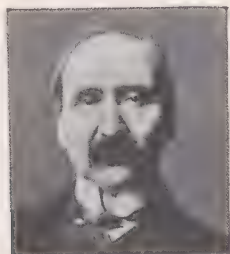
**Muirhead, John, London, England.**  
Member of the Royal Society of British Artists, London, and of the Royal Scottish Society of Painters in Water Colours. Represented in the Museum, Hobart, Tasmania. Silver and Bronze Medals, Crystal Palace, London

211—The Calm Before a Storm, St. Ives  
(Winter)

212—Breton Peasants Dancing

**Murphy, Hermann Dudley, Boston, Massachusetts; born, Marlboro, Massachusetts.** Represented in the Albright Art Gallery, Buffalo, and in the Art Institute of Chicago. Bronze Medal, Pan-American Exposition, Buffalo, 1901; Silver Medal, Universal Exposition, St. Louis, 1904

213—The Palazzo Sagredo



John Muirhead

**Murphy, J. Francis**, New York, New York; born, Oswego, New York. Member of the National Academy of Design, New York. Represented in the Metropolitan Museum of Art, New York, and in the Corcoran Gallery of Art, Washington, D. C. Second Hallgarten Prize, National Academy of Design, 1885; Webb Prize, Society of American Artists, 1887; Medal, Columbian Exposition, Chicago, 1893; Honorable Mention, Exposition Universelle, Paris, 1900; Silver Medal, Pan-American Exposition, Buffalo, 1901; Gold Medal, Charleston Exposition, 1902; Carnegie Prize, Society of American Artists, 1902; Silver Medal, Universal Exposition, St. Louis, 1904; Inness Medal, National Academy of Design, 1910

214—Landscape



Hermann Dudley Murphy



ALBERT NEUHUYS

215—Rustic Interior



Neuhuys, Albert, Amsterdam, Holland; born at Utrecht. Knight in the Order of the Netherland Lion; Officer in the Order of Saint Michel of Bavaria; Member of the *Arti et Amicitiae*, Amsterdam. Represented in Tyler's Museum, Haarlem; The National Museum, Amsterdam; and in collections in Budapest, Dordrecht, The Hague, Munich, and New York. Silver Medal, Exposition Universelle, 1889, Paris; Silver Medal, Vienna, 1894; Medal of the first class, Munich, 1905; Medals: Chicago, Budapest, and Amsterdam

215—Rustic Interior\*

Nichols, Henry Hobart, New York, New York; born, Washington, D. C. Member of the Society of Washington Artists; New York Water Color Club

216—Across the Valley



J. Francis Murphy

Nicholson, William, The Grange, Rottingdean, Sussex, England  
217—Carlina\*

Nissl, Rudolf, Munich, Germany. Member of the Secession Society, Munich  
218—Interior

Ochtman, Leonard, Cos Cob, Connecticut; born, Zonnemaire, Holland. Member of the National Academy of Design, National Institute of Arts and Letters, Society of American Artists, Society of Landscape Painters, American Water Color Society, and New York Water Color Club, New York; Brooklyn Art Club. Represented in the Brooklyn Institute of Arts and Sciences; Corcoran



Albert Neuhuys



LEONARD OCHTMAN

220—October Haze



Gallery of Art, Washington, D. C.; National Gallery, Washington, D. C.; Columbus Gallery of Fine Arts; Museum of Art, St. Louis; Richmond Art Club; Denver Art Club; Lincoln Art Association. Prize, Brooklyn Art Club, 1891; Medal, Columbian Exposition, Chicago, 1893; Gold Medal, Philadelphia Art Club, 1894; Silver Medal, Pan-American Exposition, Buffalo, 1901; Silver Medal, Charleston Exposition, 1902; Shaw Prize, Society of American Artists, 1902; Inness Gold Medal, National Academy of Design, 1903; Webb Prize, Society of American Artists, 1904; two Gold Medals, Universal Exposition, St. Louis, 1904; Second Corcoran Prize, Washington Society of Artists, 1905

219—Winter Light\*

220—October Haze\*



Leonard Ochtman

Olsson, Julius, St. Ives, Cornwall, England; born, London, England. Member of the Institute of Oil Painters, London, and of the Société Internationale des Peintres, Paris. Represented in the corporation museums and art galleries, Birmingham, Rochdale, Hull, and Oldham; Victoria Institute, Worcester, England; National Art Gallery of South Australia, Adelaide. Honorable Mention, Carnegie Institute, 1900; Honorable Mention, Exposition Universelle, Paris, 1900; Medal of the third class, Salon, Paris, 1903; H. C., Salon, Paris, 1906

221—The Swell of Summer Seas

Oppenheimer, Joseph, Berlin, Germany. Associate of the Society of Sculptors, Painters and Gravers, London; Member of the Secession Society, Berlin. Medal of the second class, International Art Exhibition, Munich, 1910

222—Chinese Porcelain

*Awarded Honorable Mention,  
Carnegie Institute, 1910*



Julius Olsson



JOSEPH OPPENHEIMER

222—Chinese Porcelain.  
negie Institute, 1910

Awarded Honorable Mention, Car-



Orpen, William, London, England. Associate of the Royal Academy of Arts, London; Member of the Royal Hibernian Academy of Arts, Dublin; International Society of Sculptors, Painters and Gravers; New English Art Club; Portrait Painter Society of Twelve. Represented in collections in Belfast, Leeds, Dublin, and Oldham

223—Portrait of the Artist

*Awarded Medal of the First Class,  
Carnegie Institute, 1910*

Park, Stuart, Glasgow, Scotland. Member of the International Society of Sculptors, Painters and Gravers, London. Represented in collections in St. Louis, Buffalo, and Glasgow

224—Red and White Roses

¶ Parshall, De Witt, New York, New York; born, Buffalo, New York. Represented in the Metropolitan Museum of Art, New York

225—Caverns of the Deep

**Pearce,** Charles Sprague, Paris, France.  
Associate of the National Academy of Design, and of the National Institute of Arts and Letters, New York; Society of American Painters, Paris. Represented in the Art Institute, Chicago; Albright Art Gallery, Buffalo; Congressional Library, Washington, D. C. Gold Medals: Boston, Paris, Munich, Vienna, San Francisco, Atlanta; Medal of Honor, Ghent, and Berlin; Knight of the Legion of Honor, France; Knight of the Order of the Red Eagle, Prussia; Knight of the Order of the Danebrog of Denmark; Knight of the Order of Leopold of Belgium

226—The Laughing Girl\*

**Pearce,** Edgar, Philadelphia, Pennsylvania

227—Interior with Figures



Camille Pissarro



WILLIAM ORPEN

223—Portrait of the Artist.  
Class, Carnegie Institute, 1910

Awarded Medal of the First



Pissarro, Camille, Paris, France; born,  
Normandy, France

228—Sunset on a Foggy Day: Rouen\*

Poore, Henry Rankin, Orange, New  
Jersey

229—The Cloud

Priestman, Arnold, Bradford, England.  
Member of the Imperial Arts League,  
Represented in the Corporation Art Gal-  
lery, Bradford, and in the City Art Gal-  
lery, Leeds, England

230—Evening



Henry Rankin Poore

Pryde, James, London, England. Member of the International Society of Sculptors, Painters and Gravers, London. Represented in the Glasgow Art Gallery and Museum (Kelvingrove)

231—An Interior

Ranger, Henry W., New York, New York; born, New York. Associate of the National Academy of Design, New York; Member of the American Water Color Society, New York. Bronze Medal, Exposition Universelle, Paris, 1900; Silver Medal, Pan-American Exposition, Buffalo, 1901; Gold Medal, Charleston Exposition, 1902

232—East End of Fisher's Island\*

Redfield, Edward Willis, Center Bridge, Pennsylvania; born, Bridgeville, Delaware. Fellowship of the Pennsylvania



Arnold Priestman



HENRY W. RANGER

232—East End of Fisher's Island



Academy of the Fine Arts, Philadelphia; Member of the National Institute of Arts and Letters, New York; Society of American Artists, New York; Society of American Painters, Paris. Represented in the Pennsylvania Academy of the Fine Arts; Art Institute of Chicago; John Herron Art Institute, Indianapolis; Cincinnati Museum of Art; New Orleans Art Association; Corcoran Gallery of Art, Washington, D. C.; Telfair Academy of Arts and Sciences, Savannah, Georgia; Brooklyn Institute of Arts and Letters; Shaw Collection, New York; Carnegie Institute; Art Club of Philadelphia; Luxembourg, Paris; Detroit Museum of Art; Art Museum, St. Louis. Gold Medal, Philadelphia Art Club, 1896; Bronze Medal, Exposition Universelle, Paris, 1900; Bronze Medal, Pan-American Exposition, Buffalo, 1901; Temple Gold



Henry W. Ranger

Medal, Pennsylvania Academy of the Fine Arts, 1903; Second Hallgarten Prize, National Academy of Design, 1904; Shaw Fund Prize, Society of American Artists, 1904; Silver Medal, Universal Exposition, St. Louis, 1904; Medal of the second class, Carnegie Institute, 1905; Sesnan Gold Medal, Pennsylvania Academy of the Fine Arts, 1905; Webb Prize, Society of American Artists, 1906; Gold Medal of Honor, Pennsylvania Academy of the Fine Arts, 1907; Third Prize, Corcoran Gallery of Art, Washington, D. C., 1907; Honorable Mention, Salon, Paris, 1908; First Prize, Corcoran Gallery of Art, Washington, D. C., 1909; Medal of the third class, Salon, Paris, 1909; Harris Prize and Medal, Chicago Art Institute, 1909; Corcoran Gold Medal, Washington, D. C., 1909

233—The Briar Patch\*

234—The White House\*



Edward W. Redfield



EDWARD W. REDFIELD  
234—The White House



Reid, Robert, New York, New York; born, Stockbridge, Massachusetts. Associate of the National Academy of Design; Member of the Ten American Painters, and of the National Institute of Arts and Letters, New York. Represented in the Metropolitan Museum, New York; Corcoran Gallery of Art, Washington, D. C. Medal, Columbian Exposition, Chicago, 1893; Clarke Prize, National Academy of Design, 1897; First Hallgarten Prize, National Academy of Design, 1898; Silver and Gold Medals, Exposition Universelle, Paris, 1900; Silver Medal, Pan-American Exposition, Buffalo, 1901; Silver Medal, Universal Exposition, St. Louis, 1904

235—The Hill Top

Renoir, Pierre Auguste, Paris, France;  
born, Limoges, France. Knight of the  
Legion of Honor, France, 1900  
236—Young Girl Holding a Basket of  
Flowers\*

Riviere, Briton, London, England.  
Member of the Royal Academy of Arts,  
London. Represented in Chantrey Be-  
quest collection, Tate Gallery; Guild  
Hall, London, and in the city galleries of  
Liverpool, Manchester, Birmingham, and  
Nottingham. Medal of the third class,  
Exposition Universelle, Paris, 1878;  
Bronze Medal, Exposition Universelle,  
Paris, 1889; Medal of the second class,  
Paris International Exhibition, 1900  
237—Androclus and the Lion



Pierre Auguste Renoir



EDWARD F. ROOK

239—Laurel.      Awarded Medal of the Third Class, Carnegie Institute, 1910



**Robinson, William S.,** New York, New York; born, East Gloucester, Massachusetts. Associate of the National Academy of Design, New York. Honorable Mention, Exposition Universelle, Paris, 1900; Honorable Mention, Pan-American Exposition, Buffalo, 1901; Bronze Medal, Universal Exposition, St. Louis, 1904

238—Midsummer Night

**Rook, Edward F.,** Old Lyme, Connecticut; born, New York. Associate of the National Academy of Design, New York. Represented in the Pennsylvania Academy of the Fine Arts, Philadelphia; Art Museum, Cincinnati. Temple Gold Medal, Pennsylvania Academy of the Fine Arts, 1898; Bronze Medal, Pan-



William S. Robinson

American Exposition, Buffalo, 1901; two  
Silver Medals, Universal Exposition, St.  
Louis, 1904

239—Laurel

*Awarded Medal of the Third Class,  
Carnegie Institute, 1910*

Rosen, Charles, New Hope, Pennsylva-  
nia; born, Reagentown, Pennsylvania.  
Represented in the collections of the  
Minneapolis Society of Fine Arts, and  
the Duluth Art Association

240—The Apple Tree

241—Old Sycamore: Winter

Roth, Ernest David, New York, New  
York; born, Stuttgart, Germany

242—The Yellow House

243—Landscape

Sándor, Mathias, New York, New York;  
born, Hungary

244—The Enchanted Mesa



Edward F. Rook

**Sargent, John S.,** London, England; born, Florence, Italy. Member of the National Academy of Design, New York; the Royal Academy of Arts, London; Society of American Painters, and Société Nationale des Beaux-Arts, Paris. Medal of the second class, Salon, Paris, 1881; Medal of Honor, Exposition Universelle, Paris, 1889; Knight of the Legion of Honor, France, 1889; Bronze Medal, Columbian Exposition, Chicago, 1893; Temple Gold Medal, Pennsylvania Academy of the Fine Arts, 1894; Medal of Honor, Exposition Universelle, Paris, 1900; Gold Medal, Pan-American Exposition, Buffalo, 1901; Converse Gold Medal, Pennsylvania Academy of the Fine Arts, 1903; Gold Medal, Berlin, 1903; Grand Prize, Universal Exposition, St. Louis, 1904; Grand Medal of Honor, Liege, 1905; Carol H. Beck Gold



John S. Sargent

Medal, Pennsylvania Academy of the  
Fine Arts, 1909

245—Portrait of Miss Brice\*

246—Portrait of Charles J. Paine\*

Schofield, W. Elmer, Philadelphia, Pennsylvania; born, Philadelphia. Member of the Royal Society of British Artists, London; National Academy of Design and Royal Society of Oil Painters, New York; Fellowship of the Pennsylvania Academy of the Fine Arts, Philadelphia. Represented in the Art Museum, Cincinnati; Pennsylvania Academy of the Fine Arts; Corcoran Gallery of Art, Washington, D. C.; Metropolitan Museum of Art, New York; John Herron Art Institute, Indianapolis; Albright Art Gallery, Buffalo; Carnegie Institute. Webb Prize, Society of American Artists, 1900; Honorable Mention, Exposition Universelle, Paris, 1900; Honorable Mention, Carnegie Institute, 1900; First Hallgarten Prize,



W. Elmer Schofield



JOHN S. SARGENT

245—Portrait of Miss Brice



National Academy of Design, 1901; Silver Medal, Pan-American Exposition, Buffalo, 1901; Sesnan Gold Medal, Pennsylvania Academy of the Fine Arts, 1903; Medal of the first class, Carnegie Institute, 1904; Silver Medal, Universal Exposition, St. Louis, 1904

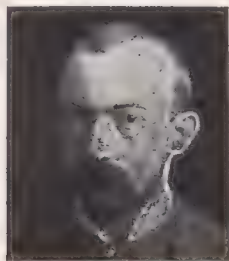
247—The Frozen Mill Dam\*

248—March Sunlight\*

Schramm-Zittau, Rudolf, Munich, Germany. Member of the Secession Society, Munich. Represented in the New Pinakothek, Munich; National Gallery, Berlin; Civic Museum, Magdeburg, Germany. Medal of the second class, International Exposition, Munich, 1901; Medal of the second class, Dresden, 1901; Medal of the third class, Salon, Paris, 1901; Medal of the first class, International Exposition, Venice, 1903

249—Carlsplatz, Munich\*

250—Ducks\*



Rudolf Schramm-Zittau

Schwartz, Andrew T., New York, New York; born, Louisville, Kentucky. Member of the Architectural League, and of the National Society of Mural Painters, New York; Circolo Artistica, Rome. Lazarus Scholarship to Rome, 1899

251—Wild Flowers

252—Primitive Family

Sewell, Robert V. V., Oyster Bay, Long Island, New York; born, New York. Member of the National Academy of Design, Architectural League, and of the Society of Mural Painters, New York. First Hallgarten Prize, National Academy of Design, New York, 1889; Silver Medal, Pan-American Exposition, Buffalo, 1901; Silver Medal, St. Louis Exposition, 1904

253—Psyche seeks Love beyond the River of the Dead



Andrew T. Schwartz



W. ELMER SCHOFIELD

248—March Sunlight



Shannon, Charles, London, England.  
Member of the International Society of  
Sculptors, Painters and Gravers, London;  
Associate of the Société Nationale des  
Beaux-Arts, Paris. Represented in the  
Luxembourg, Paris, and in collections in  
Manchester, Mannheim, Munich, and  
Vienna. Gold Medal, Munich, 1897;  
Silver Medal, Paris Salon, 1909

254—Miss Lillah Macarthy in the Dress of  
Doña Anâ in Bernard Shaw's "Don  
Juan in Hell"

Shannon, James Jebusa, London, Eng-  
land; born, Amsterdam, New York.  
Member of the Royal Academy of Arts,  
London; Société Nationale des Beaux-  
Arts, Paris. Represented in the Tate  
Gallery, London; Carnegie Institute; Cor-  
coran Gallery, Washington; and in a col-  
lection in Copenhagen. Gold Medal, Ex-

position Universelle, Paris, 1889; Medal of the first class, Berlin; Medal of the second class, Munich; Gold Medal, Carnegie Institute, 1897; Lippincott Prize, Pennsylvania Academy of the Fine Arts, Philadelphia, 1899; Silver Medal, Exposition Universelle, Paris, 1900; Gold Medal, Pan-American Exposition, Buffalo, 1901; Gold Medal, Universal Exposition, St. Louis, 1904; Gold Medal, International Exposition, Venice, 1906

255—The Infant Bacchus\*

**Simon, Lucien**, Paris, France; born, Paris. Member of the Société Nationale des Beaux-Arts, Paris; Secession Society, Berlin; Secession Society, Vienna. Represented in Museums in Paris, Philadelphia, Dresden, Budapest, Venice, Liege, Stockholm, and in the Carnegie Institute. Honorable Mention, Salon, Paris, 1885; Medal of the third class, Salon, Paris,



Lucien Simon



LUCIEN SIMON

256—Girl with Carnations



1890; Honorable Mention, Carnegie Institute, 1899; Gold Medal, Exposition Universelle, 1900; Medal of the first class, International Exposition, Munich, 1901; Medal of the first class, Carnegie Institute, 1905; Knight of the Legion of Honor, France; Gold Medals, Venice and Barcelona

256—Girl with Carnations

Sisley, Alfred, Paris, France; born, Paris, 1840; died, Morêt, France, 1899

257—Flood at Morêt\*

Sorolla y Bastida, Joaquín, Madrid, Spain. Corresponding Member of the Academy of France. Represented in the Luxembourg, Paris, and in the museums of Madrid, Udine, Berlin, and St. Louis. Grand Prix, Paris, 1900

258—President Taft\*



Alfred Sisley

Sotter, George W., Pittsburgh, Pennsylvania  
259—The Mill Yard  
260—A Pittsburgh Mill

Spencer, Robert, Point Pleasant, Pennsylvania  
261—Deserted Cottage  
262—The Flume

Steer, P. Wilson, London, England.  
Member of the New English Art Club.  
Represented in the Tate Gallery, London; Gallery of Modern Art, Dublin; Melbourne Art Gallery; Uffizi Gallery, Florence; Welsh National Museum, Cardiff  
263—Grande Place, Montreuil



Joaquin Sorolla y Bastida



P. WILSON STEER

263—Grande Place; Montreuil



Stehlin, Caroline, New York, New  
York

264—Arrangement in Blue and White

Streeton, Arthur, London, England.  
Represented in National Galleries at  
Melbourne, Sydney, and Adelaide  
(Australia). Honorable Mention, Société  
des Artistes Français, Paris; Gold Medal,  
Société des Artistes Français, Paris

265—Australia Felix

Stevenson, R. Macaulay, Robinsfield,  
Scotland. Member of the International  
Society of Sculptors, Painters and Grav-  
ers, London; Royal Scottish Society of  
Water Color Painters; The Secession So-  
ciety, Munich. Represented in the mu-  
nicipal galleries of Barcelona, Weimar,  
and Glasgow; National Galleries of Ber-  
lin, Brussels, Munich, and Prague; Al-

bright Gallery, Buffalo; Museum of Fine Arts, St. Louis; Count Andressy's collection, Budapest; King of Italy's collection; collection of Prince Luitpold, of Bavaria. Gold Medal, Munich, 1893; Diploma of Honor, Barcelona, 1894; Silver Medal, Brussels International Exposition, 1897  
266—The Old Mill Dam

Stoddard, Alice Kent, Philadelphia,  
Pennsylvania  
267—Gold Fish

Symons, George Gardner, Brooklyn, New York; born, Chicago, Illinois. Member of the Society of Western Artists, Chicago; Société Internationale des Beaux-Arts, Paris. Represented in the Metropolitan Museum of Art, New York; Museum of Arts, Cincinnati; and in a collection in



GEORGE GARDNER SYMONS  
269—An Opalescent River



Lincoln, Nebraska. Carnegie Prize, National Academy of Design, New York, 1909

268—Snow Clouds

269—An Opalescent River

**Tanner, Henry Ossawa**, Paris, France; born, Pittsburgh, Pennsylvania. Member of the American Art Association and of the Society of American Artists, Paris; Associate Member of the National Academy of Design, New York. Represented in the Luxembourg, Paris; Carnegie Institute; Pennsylvania Academy of the Fine Arts; Wiltach Collection, Philadelphia; Art Institute of Chicago. Honorable Mention, Salon, Paris, 1896; Medal of the third class, Salon, Paris, 1897; Medal of the second class, Exposition Universelle, Paris, 1900; Lippincott Prize, Pennsylvania Academy



Henry Ossawa Tanner

of the Fine Arts, 1900; Silver Medal, Pan-American Exposition, Buffalo, 1901; Silver Medal, Universal Exposition, St. Louis, 1904; Medal of the second class, Salon, Paris, 1906; Harris Prize, Art Institute, Chicago, 1906

270—Mary

271—The Disciples see Christ Walking on the Water

Taylor, Charles J., New York, New York; born, New York. Honorable Mention, Pan-American Exposition, Buffalo, 1901

272—June

Thayer, Abbott H., Monadnock, New Hampshire

273—Winged Figure



Abbott H. Thayer



ABBOTT H. THAYER

273—Winged Figure



Thomason, Frances Q., Paris, France.  
Member of the Allied Artists' Association,  
London; International Art League,  
Paris. Bronze Medal, Universal Expo-  
sition, St. Louis, 1904

274—In the Studio

275—The White Chimney

Thompson, Leslie P., Boston, Massachu-  
setts; born, Medford, Massachusetts.  
Member of the Boston Water Color Club.  
Bronze Medal, Universal Exposition, St.  
Louis, 1904

276—Girl in Profile

Tito, Ettore, Venice, Italy. Member of  
the International Society of Painting and  
Sculpture, Paris. Represented in the  
Luxembourg, Paris, and in collections in  
Venice, Rome, Budapest, Trieste, and  
Barcelona. Knight of the Legion of

Honor, France; Gold Medal, Paris, 1900;  
Gold Medals: Vienna, Munich, Rome  
and Venice

277—Life

278—Returning from Fishing, near Venice

**Tryon**, Dwight William, New York,  
New York; born, Hartford, Connecticut.  
Member of the National Academy of  
Design, Society of American Artists, and  
of the American Water Color Society,  
New York. Represented in the Carne-  
gie Institute; Corcoran Gallery of Art,  
Washington, D. C.; Albright Art Gal-  
lery, Buffalo; Metropolitan Museum of  
Art, New York; Pennsylvania Acad-  
emy of the Fine Arts, Philadelphia;  
Museum of the Fine Arts, St. Louis;  
Museum of Art, Detroit; and in the Art  
Museum, Cincinnati. Gold Medals,  
American Art Association, New York,  
1886 and 1887; Third Hallgarten Prize,

National Academy of Design, New York, 1887; Palmer Prize, Chicago Interstate Exposition, 1889; Webb Prize, Society of American Artists, 1889; Medal of the first class, International Exposition, Munich, 1892; Medal, Columbian Exposition, Chicago, 1893; First Prize, Cleveland Interstate Exposition, 1895; First Prize, Tennessee Centennial, 1897; Gold Medal, Carnegie Institute, 1898; Chronological Medal, Carnegie Institute, 1899; Gold Medal, Pan-American Exposition, Buffalo, 1901; Gold Medal, Universal Exposition, St. Louis, 1904

279—Night\*

Twachtman, John H., born, Cincinnati, Ohio, 1853; died, Gloucester, Massachusetts, 1902. Represented in the Carnegie Institute; Pennsylvania Academy of the Fine Arts, Philadelphia; Museum of



John H. Twachtman

Fine Arts, Boston; John Herron Art Institute, Indianapolis; and in the Museum of Arts, Cincinnati. Webb Prize, Society of American Artists, New York, 1888; Bronze Medal, Columbian Exposition, Chicago, 1893; Temple Gold Medal, Pennsylvania Academy of the Fine Arts, 1895; Silver Medal, Pan-American Exposition, Buffalo, 1901

280—The Pool\*

Ullman, Eugène Paul, Paris, France; born, New York. Associate of the Société Nationale des Beaux-Arts, Paris; Society of American Painters, Paris. Represented in the Luxembourg, Paris. Bronze Medal, Universal Exposition, St. Louis, 1904; Medal of the first class, Orleans, France, 1905; Second Prize, Worcester Art Museum, Massachusetts, 1905;

Temple Gold Medal, Pennsylvania  
Academy of the Fine Arts, Philadelphia,  
1906

281—Woman Sewing

Vaillant, Louis David, New York,  
New York; born, Cleveland, Ohio.  
Member of National Society of Mural  
Painters, Municipal Art Society, and of  
the Architectural League, New York.  
Second Hallgarten Prize, National Acad-  
emy of Design, New York, 1910

282—Woodland Play\*

Van der Veer, Mary, Amsterdam, New  
York; born, Amsterdam, New York.  
Member of the New York Water Color  
Club; Woman's Art Club of New York;  
Fellowship of the Pennsylvania Acad-

emy of the Fine Arts, Philadelphia.  
Bronze Medal, Universal Exposition, St.  
Louis, 1904

283—The Lullaby

Van der Weyden, Harry, Paris, France;  
born, Boston, Massachusetts. Member  
of the Institute of Oil Painters, and of  
the Society of American Painters, Paris.  
Medal of the third class, Salon, Paris,  
1891; Medal of the second class, Interna-  
tional Exposition, Antwerp, 1894; Gold  
Medal, Atlanta Exposition, 1895; Bronze  
Medal, Exposition Universelle, Paris,  
1900; Medal of the second class, Interna-  
tional Exposition, Munich, 1901; Gold  
Medal, Vienna, 1902; Medal of the third  
class, Liege, 1905

284—In my Garden

Wagner, Fred, Philadelphia, Pennsylva-  
nia; born, Valley Forge, Pennsylvania.  
Member of the Philadelphia Sketch Club

285—The River Front



A. BRYAN WALL  
286—The Willows



Wall, A. Bryan, Pittsburgh, Pennsylvania; born, Allegheny, Pennsylvania  
286—The Willows

Watkins, Susan, New York, New York; born, California. Honorable Mention, Salon, Paris, 1899; Medal of the third class, Salon, Paris, 1901; Silver Medal, Universal Exposition, St. Louis, 1904; Julia A. Shaw, Memorial Prize, National Academy of Design, New York, 1910

287—Last Rays, Capri

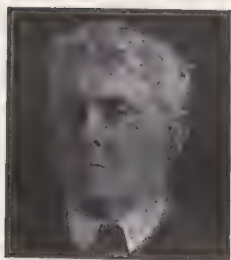
288—Interior

289—The Quiet Room\*

Waugh, Frederick J., Montclair Heights, New Jersey. Member of the Bristol Academy of Fine Arts, England; Associate of the National Academy of Design, New York. Represented in the

Walker Art Gallery, Liverpool; Durban Municipal Art Gallery, Natal, South Africa; National Gallery, Evans Collection, Washington, D. C.; Metropolitan Museum, Hearn Collection, New York  
290—The Outer Surf

Weir, J. Alden, New York, New York; born, West Point, New York. Member of the National Academy of Design and of the Ten American Painters, New York. Represented in the Metropolitan Museum of Art, New York; National Museum, Washington, D. C.; Pennsylvania Academy of the Fine Arts, Philadelphia. Honorable Mention, Salon, Paris, 1882; Silver and Bronze Medals, Exposition Universelle, Paris, 1889; Medal of the third class, Carnegie Institute, 1897; Silver Medal, Exposition Universelle, Paris, 1900; Gold Medal, Pan-American Exposition, Buffalo, 1901;



J. Alden Weir



J. ALDEN WEIR

291—Pan and the Wolf: Landscape



Gold and Silver Medals, Universal Exposition, St. Louis, 1904; Inness Gold Medal, National Academy of Design, New York, 1906; Prize, Boston Art Club; Prize, American Art Association; Temple Gold Medal, Pennsylvania Academy of the Fine Arts, Philadelphia, 1905; Lippincott Prize, Pennsylvania Academy of the Fine Arts, Philadelphia, 1910

291—Pan and the Wolf: Landscape

292—Early Autumn in Connecticut

293—Flower Girl

Wendel, Theodore, Ipswich, Massachusetts. Sesnan Medal, Pennsylvania Academy of the Fine Arts, Philadelphia, 1909

294—The Cove, Ipswich\*

295—Sand Dunes\*



Theodore Wendel

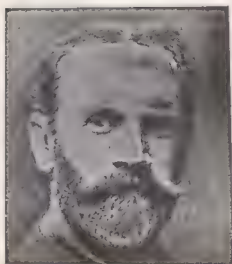
Wetherbee, George, London, England; born, Cincinnati, Ohio. Member of the Royal Institute of Oil Painters, and of the Royal British-Colonial Society of Artists, London. Represented in corporation galleries in Manchester, Preston, Oldham, Cape Town, Cape Colony, and New Zealand. Honorable Mention, Paris, 1900; Silver Medal, St. Louis, 1904; Medal, Chicago

296—A Morning Song

White, Henry C., Hartford, Connecticut; born, Hartford. Member of the New York Water Color Club

297—Spring

Wiegand, Gustave, New York, New York; born, Bremen, Germany. Bronze Medal, St. Louis Exposition, 1904; Sec-



George Wetherbee



CHARLES H. WOODBURY

301—The Valley



ond Hallgarten Prize, National Academy  
of Design, New York, 1905

298—The Crescent: Indian Summer

299—The Golden Carpet: Adirondacks

Wiles, Irving R., New York, New  
York; born, Utica, New York. Mem-  
ber of the National Academy of Design,  
and of the National Institute of Arts and  
Letters, New York. Third Hallgarten  
Prize, National Academy of Design,  
1886; Clarke Prize, National Academy  
of Design, 1889; Honorable Mention,  
Exposition Universelle, Paris, 1889;  
Bronze Medal, Columbian Exposition,  
Chicago, 1893; Gold Medal, Tennessee  
Centennial, Nashville, 1897; Shaw Fund



Irving R. Wiles

Prize, Society of American Artists, 1900; Bronze Medal, Exposition Universelle, Paris, 1900; Gold Medal, Pan-American Exposition, Buffalo, 1901; Gold Medal, Universal Exposition, St. Louis, 1904

300—Girl and Horse

Woodbury, Charles H., Boston, Massachusetts; born, Lynn, Massachusetts. Member of the National Academy of Design, New York. Represented in the Museum of Fine Arts, Boston; Worcester Art Museum; Berkshire Athenaeum, Pittsfield, Massachusetts. Gold Medal, Atlanta Exposition, 1895; Second Prize, Tennessee Centennial, Nashville, 1897; Bronze Medal, Exposition Universelle, Paris, 1900; Bronze Medal, Pan-Ameri-



Charles H. Woodbury



CHARLES MORRIS YOUNG

304—Farmhouse in Winter.  
Carnegie Institute, 1910

Awarded Honorable Mention,



can Exposition, Buffalo, 1901; First Prize, Worcester Art Museum, 1903; Silver Medal, Universal Exposition, St. Louis, 1904; Honorable Mention, Carnegie Institute, 1905; Second Prize, Worcester Art Museum, 1907

301—The Valley\*

302—Storm at Sea\*

Yates, Cullen, New York, New York; born, Bryan, Ohio. Associate of the National Academy of Design, New York. Represented in the National Gallery, Washington; Brooklyn Institute of Arts and Sciences; Montclair Gallery; Seattle Gallery; Philadelphia Art Club. Bronze Medal, Universal Exposition, St. Louis, 1904

303—Upland Pasture



Cullen Yates

Young, Charles Morris, Jenkintown, Pennsylvania; born, Gettysburg, Pennsylvania. Represented in the Albright Art Gallery, Buffalo; Pennsylvania Academy of the Fine Arts, Philadelphia; National Gallery, Budapest. Honorable Mention, Pan-American Exposition, Buffalo, 1901; Silver Medal, Charleston Exposition, 1902; Silver Medal, Universal Exposition, St. Louis, 1904; Gold Medal, Art Club of Philadelphia, 1908

304—Farm House in Winter

*Awarded Honorable Mention,  
Carnegie Institute, 1910*



Charles Morris Young

# CARNEGIE LIBRARY OF PITTSBURGH

A list of some of the best books and articles  
in the Library on the artists represented in  
this exhibition

## Adams, W. Dacres

International studio, 1906. v. 30, p. 127-134.

## Alexander, John White

Critic, 1899. v. 35, p. 609-615.

Harper's monthly, 1899. v. 99, p. 694-704.

House beautiful, 1904. v. 15, p. 67-74.

International studio, 1908. v. 34, sup. p. 85-97.

Scribner's magazine, 1899. v. 25, p. 340-348.

Studio, 1900. v. 20, p. 71-77.

World's work, 1905. v. 9, p. 5682-5698, 5993-5994.

## Allan, Robert W.

Caw. Scottish painting. 1908. p. 329-331.

International studio, 1909. v. 37, p. 89-100.

Studio, 1901. v. 23, p. 229-237.

## Beaux, Cecilia

Clement. Women in the fine arts. 1904. p. 35-38.

Hartmann. History of American art. 1902. v. 1, p. 288-290.

House beautiful, 1902. v. 11, p. 175-180.

Scribner's magazine, 1897. v. 22, p. 477-485.

Studio, 1899. v. 17, p. 215-222.

## Benson, Frank Weston

- Brush and pencil, 1900. v. 6, p. 145-157.  
Harper's monthly, 1909. v. 119, p. 105-114.  
International studio, 1908. v. 35, sup. p. 99-104.

## Betts, Louis

- Sketch book, 1906. v. 6, p. 171-180.

## Blanche, Jacques Émile

- Fortnightly review, 1906. v. 85, p. 1106-1114.  
International studio, 1904. v. 21, p. 191-199.

## Bogert, George H.

- Academy notes, 1906. v. 1, p. 164.  
Artist, 1901. v. 30, sup. p. 19.

## Boznanska, Olga de

- Clement. Women in the fine arts. 1904. p. 375.

## Bramley, Frank

- Phythian. Fifty years of modern painting. 1908. p. 326-327.  
Magazine of art, 1902. v. 27, p. 54-59.  
Scribner's magazine, 1894. v. 15, p. 423-425.

## Breckenridge, Hugh Henry

- Academy notes, 1908. v. 3, p. 131, 150.  
International studio, 1909. v. 37, sup. p. 34-36.

## Brush, George de Forest

- Caffin. American masters of painting. 1902. p. 129-140.  
Hartmann. History of American art. 1902. v. 1, p. 262-271.  
International studio, 1908. v. 34, sup. p. 47-56.

## Bunce, William Gedney

Century, 1900. v. 60, p. 635.

## Caliga, Isaac Henry

Robinson. Living New England artists. 1888. p. 29-36.

## Cassatt, Mary

Cary. Artists, past and present. 1909. p. 25-37.

Isham. History of American painting. 1905. p. 411-412.

Mauclair. French impressionists. p. 146-149.

Pythian. Fifty years of modern painting. 1908. p. 121, 206-207, 271.

Current literature, 1909. v. 46, p. 167-170.

International studio, 1905. v. 27, sup. p. 1-7.

Scribner's magazine, 1896. v. 19, p. 353-361.

## Chase, William Merritt

Benjamin. Our American artists. 1886. p. 59-72.

Hartmann. History of American art. 1902. v. 1, p. 226-230, 294-296.

Isham. History of American painting. 1905. p. 383-384.

McSpadden. Famous painters of America. 1907. p. 327-354.

Harper's monthly, 1889. v. 78, p. 549-557.

International studio, 1909. v. 39, sup. p. 29-36.

Studio, 1900. v. 21, p. 151-158.

## Clark, Alson Skinner

Academy notes, 1909. v. 4, p. 194-195.

## Claus, Émile

Dewhurst. Impressionist painting. 1904. p. 79-81.

Lemonnier. L'école belge de peinture, 1830-1905. 1906. p. 192-196.

Lemonnier. Émile Claus. 1908.

Taeye. Les artistes belges contemporains. 1894. p. 549-561.

Artist, 1899. v. 25, p. 169-181.  
Studio, 1899. v. 17, p. 143-157.

### **Coman, Charlotte B.**

American Art League. Essays on American art. 1896. p.  
15-16.

### **Costa, John da**

Magazine of art, 1898. v. 22, p. 345-348.  
Studio, 1894. v. 4, p. 84-87.

### **Cottet, Charles**

Phythian. Fifty years of modern painting. 1908. p. 197-  
193.  
Art et décoration, 1904. v. 15, p. 101-116.  
Brush and pencil, 1902. v. 11, p. 210-222.  
Magazine of art, 1902. v. 26, p. 481-487.  
Studio, 1899. v. 15, p. 227-241.

### **Crane, Bruce**

American Art League. Essays on American art. 1896. p.  
89-91.  
Brush and pencil, 1902. v. 11, p. 1-10.

### **Daingerfield, Elliott**

Monthly illustrator, 1895. v. 3, p. 177-182.

### **Davis, Charles H.**

Hartmann. History of American art. 1902. v. 1, p. 86-  
90.  
Century, 1894. v. 48, p. 319.  
New England magazine, 1902. v. 33, p. 423-437.

### **Dearth, Henry Golden**

Academy notes, 1910. v. 5, p. 15.  
Century, 1905. v. 70, p. 157.

## D'Espagnat, Georges

Art et décoration, 1899. v. 6, p. 121-123.

Art et décoration, 1904. v. 16, p. 57-60.

## Dougherty, Paul

International studio, 1906. v. 30, p. 180-182.

International studio, 1908. v. 36, sup. p. 3-11.

## Dufner, Edward

Academy notes, 1906. v. 2, p. 12.

## Duveneck, Frank

Isham. History of American painting. 1905. p. 378-379.

## Eakins, Thomas

Caffin. Story of American painting. 1907. p. 228-233.

Hartmann. History of American art. 1902. v. 1, p. 200-207.

## East, Alfred

East. Art of landscape painting in oil colour. 1906.

Phythian. Fifty years of modern painting. 1908. p. 348-349.

International studio, 1905. v. 25, p. 124-137.

International studio, 1909. v. 38, sup. p. 72-76.

Magazine of art, 1895. v. 18, p. 81-88.

Magazine of art, 1904. v. 28, p. 381-384.

Studio, 1896. v. 7, p. 133-142.

## Emmet, Ellen G.

Century, 1909. v. 78, p. 155.

Critic, 1906. v. 48, p. 333.

## **Enneking, John J.**

- Benjamin. Our American artists. 1886. p. 104-118.  
Robinson. Living New England artists. 1888. p. 59-65.  
Brush and pencil, 1902. v. 10, p. 335-345.

## **Fergusson, John Duncan**

- International studio, 1907. v. 31, p. 202-210.

## **Forbes, Stanhope A.**

- Birch. Stanhope A. Forbes and Elizabeth Stanhope Forbes.  
1906.  
Art journal, 1892. v. 44, p. 65-69.  
Magazine of art, 1892. v. 15, p. 181-184.  
Scribner's magazine, 1894. v. 15, p. 688-691.  
Studio, 1901. v. 23, p. 81-88.

## **Foster, Ben**

- Artist, 1901. v. 29, sup. p. 20.

## **Frieseke, Frederick Carl**

- Harper's monthly, 1909. v. 118, p. 291.

## **Gilsoul, Victor**

- Burlington magazine, 1903. v. 3, p. 94-99.

## **Greiffenhagen, Maurice**

- Art journal, 1894. v. 46, p. 225-229.  
Artist, 1901. v. 32, p. 57-64.  
Book buyer, 1897. v. 14, p. 148-152.  
Studio, 1897. v. 9, p. 235-245.

## **Groll, Albert L.**

- International studio, 1906. v. 28, sup. p. 78-82.  
International studio, 1906. v. 29, p. 270-271.

## **Guthrie, Sir James**

- Caw. Scottish painting. 1908. p. 365-370.  
Martin. Glasgow school of painting. 1897. p. 17-21.

Moore. Modern painting. 1900. p. 205-207.

### Hamilton, John McLure

Scribner's magazine, 1900. v. 27, p. 733-738.

### Harrison, Alexander

Child. Art and criticism. 1892. p. 109-113.

Dewhurst. Impressionist painting. 1904. p. 92-94.

Hartmann. History of American art. 1902. v. 2, p. 178-180.

Isham. History of American painting. 1905. p. 410-411.

Muther. History of modern painting. 1907. v. 4, p. 301-302.

Brush and pencil, 1899. v. 4, p. 133-144.

Studio, 1898. v. 13, p. 248-250.

### Harrison, Birge

Academy notes, 1909. v. 4, p. 113-115.

Scribner's magazine, 1907. v. 42, p. 576-584.

### Hassam, Child

Gallatin. Whistler, notes and footnotes. 1907. p. 89-95.

Robinson. Living New England artists. 1888. p. 101-106.

Brush and pencil, 1901. v. 8, p. 141-150.

House beautiful, 1908. v. 23, p. 19-20.

International studio, 1906. v. 29, p. 267-270.

### Hawthorne, Charles W.

Art interchange, 1904. v. 52, p. 138.

Brush and pencil, 1899. v. 4, p. 255-257.

Brush and pencil, 1905. v. 15, p. 227-235.

International studio, 1905. v. 26, p. 261-264.

International studio, 1909. v. 37, sup. p. 65-68.

### Henri, Robert

Hartmann. History of American art, 1902. v. 2, p. 256-259.

Critic, 1906. v. 49, p. 130-131.

International studio, 1906. v. 30, p. 182-183.

## Hornel, E. A.

Caw. Scottish painting. 1908. p. 400-403.

Martin. Glasgow school of painting. 1897. p. 30-33.

Academy notes, 1905. v. 1, p. 102-103, 115-116.

International studio, 1907. v. 32, p. 3-9.

## Hurley, Edward Timothy

International studio, 1906. v. 29, sup. p. 63-71.

## Jeannot, Pierre Georges

Pennell. Pen drawing. 1894. p. 82.

## Kampf, Arthur

Hundert meister der gegenwart. p. 75.

Pietsch. Contemporary German art. 1888. v. 1, p. 70-71.

## Kendall, William Sergeant

Century, 1895. v. 50, p. 478.

Harper's monthly, 1908. v. 117, p. 568-577.

## Koehler, Robert

Brush and pencil, 1901. v. 9, p. 144-153.

## La Thangue, Henry Herbert

Art journal, 1893. v. 45, p. 169-175.

Magazine of art, 1904. v. 28, p. 1-7.

Studio, 1896. v. 9, p. 163-177.

## La Touche, Gaston

Art et décoration, 1908. v. 23, p. 177-182.

Art et décoration, 1908. v. 24, p. 37-38.

International studio, 1904. v. 22, p. 281-287.

International studio, 1908. v. 34, p. 265-278.

Magazine of art, 1904. v. 28, p. 253-259.  
Studio, 1899. v. 16, p. 77-90.

### **Le Sidaner, Henri Eugène**

Dewhurst. Impressionist painting. 1904. p. 81-83.  
Art et décoration, 1903. v. 13, p. 119-125.  
Art journal, 1904. v. 56, p. 59-64.  
Art journal, 1906. v. 58, p. 145-146.  
Gazette des beaux-arts, 1909. v. 105 (ser. 4, v. 2), p. 121-134.  
Studio, 1901. v. 24, p. 30-36.

### **Lindner, Moffat P.**

International studio, 1904. v. 23, p. 185-191.

### **Lockwood, Wilton**

International studio, 1907. v. 32, p. 262-268.  
Scribner's magazine, 1898. v. 23, p. 178-184.

### **Loiseau, Gustave**

Academy notes, 1907, 1908. v. 3, p. 118, 145-146.

### **Lorimer, J. H.**

Caw. Scottish painting. 1908. p. 420-423.  
Art journal, 1895. v. 47, p. 321-324.  
Artist, 1899. v. 25, p. 113-124.

### **Mann, Harrington**

Academy notes, 1908. v. 3, p. 161-162.  
Century, 1908. v. 75, p. 800-801.  
Studio, 1903. v. 29, p. 118.

### **Maufra, Maxime**

Dewhurst. Impressionist painting. 1904. p. 61-64.  
Phythian. Fifty years of modern painting. 1908. p. 207-208.  
Academy notes, 1907. v. 3, p. 109-110.

## Melchers, Gari

- Brinton. Modern artists. 1908. p. 211-225.  
Caffin. Story of American painting. 1907. p. 344-355.  
Harper's monthly, 1907. v. 114, p. 430-439.  
International studio, 1907. v. 31, sup. p. 11-18.  
Magazine of art, 1900. v. 24, p. 145-151.  
World's work, 1908. v. 15, p. 10092-10105.

## Mesdag, Hendrik Willem

- Muther. History of modern painting. 1907. v. 4, p. 101-102.  
Rooses. Dutch painters of the nineteenth century. 1899. v. 2, p. 35-58.  
Zilcken. H. W. Mesdag. 1896.  
Art journal, 1893. v. 45, p. 48-53.  
Brush and pencil, 1903. v. 11, p. 321-335.  
Magazine of art, 1898. v. 22, p. 73-79.

## Metcalf, Willard L.

- Book buyer, 1894. v. 11, p. 120-122.  
Booklovers magazine, 1905. v. 6, p. 499-511.  
Quarterly illustrator, 1895. v. 3, p. 93-96.

## Monet, Claude

- Brownell. French art. 1901. p. 104-115.  
Dewhurst. Impressionist painting. 1904. p. 37-48.  
Duret. Manet and the French impressionists. 1910. p. 137-150.  
Mauclair. French impressionists. p. 98-114.  
Meier-Graefe. Modern art. 1908. v. 1, p. 301-307.  
Phythian. Fifty years of modern painting. 1908. p. 80-96.  
Brush and pencil, 1905. v. 15, p. 181-195.  
Contemporary review, 1907. v. 91, p. 100-107.  
International studio. 1908. v. 34, p. 89-106.  
Pall Mall magazine, 1900. v. 21, p. 209-224.

## Morrice, James Wilson

Canadian magazine, 1907. v. 28, p. 219-221.

Canadian magazine, 1909. v. 34, p. 169-176.

## Murphy, Hermann Dudley

Brush and pencil, 1899. v. 5, p. 49-57.

Sketch book, 1907. v. 6, p. 303-306.

## Murphy, J. Francis

Brush and pencil, 1902. v. 10, p. 205-218.

## Neuhuys, Albert

Mattos. Dutch art in the nineteenth century. 1909. p. 133-134.

Roses. Dutch painters of the nineteenth century. v. 2, p. 19-32.

## Nicholson, William

Nicholson. Characters of romance. 1900.

Art amateur, 1900. v. 43, p. 34.

Art et décoration, 1900. v. 7, p. 90-96.

## Ochtman, Leonard

Brush and pencil, 1901. v. 9, p. 65-74.

## Olsson, Julius

International studio, 1910. v. 39, p. 274-283.

## Park, Stuart

Caw. Scottish painting. 1908. p. 449-450.

Martin. Glasgow school of painting. 1897. p. 51-52.

## Pearce, Charles Sprague

Child. Art and criticism. 1892. p. 126-129.

Rummell & Berlin. Aims and ideals of representative American painters. 1901. p. 78-80.

Magazine of art, 1893. v. 16, p. 168.

## Pissarro, Camille

- Dewhurst. Impressionist painting. 1904. p. 49-51.  
Duret. Manet and the French impressionists. 1910. p. 126-136.  
Mauclair. French impressionists. p. 132-136.  
Muther. History of modern painting. 1907. v. 3, p. 138-143.  
Phythian. Fifty years of modern painting. 1908. p. 79-80, 96-99.  
Brush and pencil, 1904. v. 13, p. 411-427.  
International studio, 1903. v. 21, p. 59-63.

## Poore, Henry Rankin

- International studio, 1909. v. 37, sup. p. 20-24.

## Pryde, James

- Caw. Scottish painting. 1908. p. 448-449.  
Idler, 1896. v. 8, 519-528.  
Studio, 1901. v. 23, p. 101-106.

## Ranger, Henry Ward

- Brush and pencil, 1905. v. 16, p. 39-44.  
International studio, 1906. v. 29, sup. p. 33-44.

## Redfield, Edward Willis

- Country life in America, 1907. v. 13, p. 194-197.

## Reid, Robert

- Hartmann. History of American art. 1902. v. 2, p. 231-232, 248-251.  
Reid. In summertime; paintings by Robert Reid, with an introduction by Royal Cortissoz. 1900.  
Artist, 1900. v. 28, p. 45-46.  
Booklovers magazine, 1905. v. 6, p. 738-750.  
Craftsman, 1905. v. 7, p. 699-712.  
International studio, 1909. v. 36, sup. p. 113-122.

## Renoir, Pierre Auguste

- Dewhurst. Impressionist painting. 1904. p. 51-53.  
Duret. Manet and the French impressionists. 1910. p. 159-169.  
Mauclair. French impressionists. p. 115-131.  
Mauclair. The great French painters. 1903. p. 111-115.  
Meièr-Graefe. Modern art. 1908. v. 1, p. 287-296.  
Muther. History of modern painting. 1907. v. 3, p. 137-138.  
Phythian. Fifty years of modern painting. 1908. p. 102-106.

## Rivière, Briton

- Armstrong. Briton Riviere; his life and work. 1891.  
Meynell. Some modern artists. 1883. p. 141-147.  
Muther. History of modern painting. 1907. v. 3, p. 355-359.  
Magazine of art, 1903. v. 27, p. 313-320.  
Portfolio, 1892. v. 23, p. 61-66, 77-83.  
Studio, 1895. v. 5, p. 124-128.

## Sargent, John Singer

- Bell. Representative painters of the nineteenth century. 1899. p. 57-60.  
Brinton. Modern artists. 1908. p. 155-169.  
Caffin. American masters of painting. 1902. p. 55-67.  
Cox. Old masters and new. 1905. p. 255-265.  
Downes. Twelve great artists. 1900. p. 165-172.  
Hartmann. History of American art. 1902. v. 2, p. 213-222.  
Isham. History of American painting. 1905. p. 428-438, 548-549.  
McSpadden. Famous painters of America. 1907. p. 273-299.  
Muther. History of modern painting. 1907. v. 4, p. 304-308.  
Phythian. Fifty years of modern painting. 1908. p. 375-380.  
Sargent. Work of John S. Sargent, R.A., with an introduc-

tory note by Mrs. Meynell. 1903.  
Century, 1896. v. 52, p. 163-178.  
Harper's monthly, 1887. v. 75, p. 683-691.  
Independent, 1899. v. 51, p. 1140-1142.  
Magazine of art, 1899. v. 23, p. 112-119.  
Scribner's magazine, 1903. v. 34, p. 515-532.  
Studio, 1900. v. 19, p. 3-21, 107-119.  
World's work, 1903. v. 7, p. 4099-4118.

## Shannon, Charles H.

Phythian. Fifty years of modern painting. 1908. p. 311-312.  
Art journal, 1902. v. 54, p. 43-46.  
Athenaeum, 1901. v. 117, p. 376-377.  
International studio, 1904. v. 24, p. 26-34.

## Simon, Lucien

Art et décoration, 1906. v. 19, p. 25-37.  
Harper's monthly, 1910. v. 120, p. 236-244.  
Magazine of art, 1902. v. 26, p. 544-549.

## Sisley, Alfred

Dewhurst. Impressionist painting. 1904. p. 53-54.  
Duret. Manet and the French impressionists. 1910. p. 151-158.  
Mauclair. French impressionists. p. 136-140.  
Moore. Modern painting. 1900. p. 85-88.  
Phythian. Fifty years of modern painting. 1908. p. 99-109.

## Sorolla y Bastida, Joaquín

Cary. Artists, past and present. 1909. p. 166-170.  
Hispanic Society of America. Catalogue of paintings by Joaquín Sorolla y Bastida. 1909.  
Hispanic Society of America. Eight essays on Joaquín Sorolla y Bastida. 2 v. 1909.  
St. James's Gallery Company. Sorolla exhibition at the Grafton Galleries, 1908, with essay on [his] art by Leonard Williams. 1908.

- Academy notes, 1909. v. 4, p. 182-190.  
Art et décoration, 1906. v. 20, p. 105-117.  
Century, 1909. v. 78, p. 26-35.  
International studio, 1904. v. 22, p. 242-249.  
International studio, 1906. v. 29, p. 26-34.  
International studio, 1909. v. 37, sup. p. 3-12.  
Outlook, 1902. v. 71, p. 19-26.  
Scribner's magazine, 1907. v. 42, p. 417-432.  
World to-day, 1909. v. 16, p. 414-420.

### **Steer, P. Wilson**

- Moore. Modern painting. 1900. p. 198-204, 238-243.  
Phythian. Fifty years of modern painting. 1908. p. 372-373.

### **Stevenson, R. Macaulay**

- Caw. Scottish painting. 1908. p. 385-386.  
Martin. Glasgow school of painting. 1897. p. 62-64.  
Studio, 1901. v. 22, p. 232-242.

### **Tanner, Henry Ossawa**

- Brush and pencil, 1900. v. 6, p. 97-107.  
Cosmopolitan, 1900. v. 29, p. 18-20.  
Current literature, 1908. v. 45, p. 405-408.  
Outlook, 1900. v. 64, p. 793-796.  
World's work, 1909. v. 18, p. 11661-11666, 11769-11775.

### **Thayer, Abbott Henderson**

- Bell. Representative painters of the nineteenth century. 1899. p. 53-56.  
Hartmann. History of American art. 1902. v. 1, p. 271-276.  
Cosmopolitan, 1902. v. 32, p. 594-596.  
House beautiful, 1902. v. 13, p. 3-9.  
International studio, 1908. v. 33, sup. p. 81-87.

## **Tito, Ettore**

- Willard. History of modern Italian art. 1900. p. 692-694.  
International studio, 1906. v. 27, p. 307-316.

## **Tryon, Dwight William**

- Caffin. American masters of painting. 1902. p. 155-167.  
Hartmann. History of American art, 1902. v. 1, p. 127-136.  
Harper's monthly, 1895. v. 91, p. 170-174.

## **Twachtman, John H.**

- Caffin. Story of American painting. 1907. p. 278-284.  
Brush and pencil, 1903. v. 12, p. 243-246.  
North American review, 1903. v. 176, p. 554-562.

## **Weir, J. Alden**

- Hartmann. History of American art. 1902. v. 2, p. 246-248.  
Burlington magazine, 1909. v. 15, p. 131-132.  
Century, 1899. v. 57, p. 956-957.  
Cosmopolitan, 1902. v. 32, p. 596-598.  
Harper's monthly, 1907. v. 114, p. 286-287.

## **Wetherbee, George**

- Magazine of art, 1903. v. 27, p. 105-110.

## **Wiles, Irving R.**

- Book buyer, 1894. v. 11, p. 387-390.  
Century, 1897. v. 54, p. 799.  
Harper's monthly, 1904. v. 109, p. 802.

## **Woodbury, Charles H.**

- Brush and pencil, 1900. v. 6, p. 1-12.

## **Young, Charles Morris**

- Academy notes, 1907. v. 2, p. 177-179.

## INDEX TO ARTISTS REPRESENTED IN THE EXHIBITION OF OIL PAINTINGS

The number following the name refers to the painting in the catalogue, and the letter following the number indicates the gallery in which the painting is exhibited

- Adams, W. Dacres, 1, N  
Alexander, John W., 2, 3, M  
Allan, Robert W., 4, O; 5, K  
Anderson, Karl, 6, M  
André, Albert, 7, M  
Baill, Joseph, 8, N  
Beal, Gifford, 9, N  
Beaux, Cecilia, 10, N; 11, M  
Becker, Benno, 12, J  
Bellows, George, 13, N; 14, I  
Benson, Frank W., 15, K; 16,  
Betts, Louis, 17, N; 18, M  
Bittinger, Charles, 19, I  
Blackstone, Harriet, 20, I  
Blanche, Jacques Émile, 21, M  
Blumenschein, Ernest L., 22, 23, I  
Bogert, George H., 24, M; 25, N  
Borchardt, Hans, 26, K  
Borie, Adolphe, 27, N  
Boznanska, Olga de, 28, M; 29, J  
Bramley, Frank, 30, M  
Breckenridge, Hugh H., 31, I

Brown, T. Austen, 32, O  
Brush, George de Forest, 33, N  
Bunce, William Gedney, 34, O  
Calíga, I. H., 35, K; 36, O  
Caputo, Ulisse, 37, 38, N  
Carlsen, Emíl, 39, O; 40, N  
Cassatt, Mary, 41, M; 42, K  
Chase, William M., 43, M; 44, M; 45, N;  
46, M  
Chimona, Nicolaus, 47, 48, O  
Chudant, Adolphe, 49, O  
Ciardi, Beppe, 50, I  
Clark, Alson S., 51, I  
Clarkson, Ralph, 52, O  
Clarenbach, Max, 53, K  
Claus, Emíl, 54, N  
Coman, Charlotte B., 55, I  
Cope, A. S., 56, N  
Costa, John da, 57, M  
Cottet, Charles, 58, M; 59, K  
Crane, Bruce, 60, N  
Daingerfield, Elliott, 61, N  
Dauchez, André, 62, N  
Davis, Charles H., 63, 64, M  
Daviol, Joseph Benjamin, 65, I  
Dearth, Henry Golden, 66, N  
D'Espagnat, Georges, 67, M  
Dessar, Louis Paul, 68, N  
De Voll, F. Usher, 69, I  
Dougherty, Paul, 70, N  
Dufner, Edward, 71, N  
Duvencck, Frank, 72, M  
East, Alfred, 73, K; 74, M; 75, N

Eakins, Thomas, 76, M  
Ebert, Charles, 77, 78, I  
Emmet, Ellen G., 79, I  
Enneking, John J., 80, I  
Fechin, Nicholas, 81, N; 82, J  
Fergusson, John Duncan, 83, 84,  
Forbes, Stanhope A., 85, N  
Foster, Ben, 86, M  
Franzen, August, 87, I  
Frieseke, Frederick C., 88, M  
Fursman, Frederick Frary, 89, N  
Garber, Daniel, 90, N; 91, M  
Genth, Lillian M., 92, O; 93, N  
Gilchrist, W. W., Jr., 94, J  
Gilsoul, Victor, 95, N  
Gorson, A. H., 96, I  
Granville-Smith, W., 97, I  
Grassel, Franz, 98, O  
Greiffenhagen, Maurice, 99, M; 100, J  
Groll, Albert L., 101, I  
Guiguet, Françoise, 102, I  
Guthrie, Sir James, 103, M  
Hacke, Ida, 104, I  
Hailman, Johanna K., 105, I  
Halford, C. H., 106, N  
Hamilton, J. McLure, 107, J; 108, O  
Harrison, Alexander, 109, N; 110, J  
Harrison, Birge, 111, 112, I  
Hassam, Childé, 113, 114, 115, 116, 117, 118,  
119, 120, 121, 122, 123, 124, 125, 126, 127,  
128, 129, 130, 131, 132, 133, 134, 135, 136,  
137, 138, 139, 140, 141, 142, 143, 144, 145,  
146, 147, 148, 149, 150, L

Hawthorne, Charles W., 151, N  
Heider, Hans, 152, N  
Henri, Robert, 153, 154, N  
Hildebrandt, H. L., 155, I  
Hopkinson, Charles, 156, I  
Hornel, E. A., 157, N  
How, Beatrice, 158, J; 159, K  
Hughes-Stanton, H., 160, I; 161, J  
Hurley, Edward Timothy, 162, I  
Huys, Modest, 163, 164, J  
Jeannot, G., 165, K  
John, Augustus, 166, N  
Kampf, Arthur, 167, O; 168, K  
Keller, H. G., 169, I  
Kendall, Sergeant, 170, M; 171, O  
Knight, Laura, 172, O  
Koehler, Robert, 173, I  
Krijitzki, Constantin, 174, O  
Langley, Walter, 175, I  
La Thangue, H. H., 176, O  
La Touche, Gaston, 177, N; 178, O  
Leader, B. Eastlake, 179, O  
Leigh, W. R., 180, I  
Lerolle, Henry, 181, O  
Le Sidaner, Henri, 182, M; 183, M  
Lever, Hayley, 184, N  
Lindner, Moffat, 185, K  
Little, Philip, 186, I  
Lockwood, Wilton, 187, J; 188, K  
Loiseau, Gustave, 189, M  
Lomont, Eugène, 190, K  
Lorimer, John Henry, 191, O  
MacCameron, Robert, 192, N

Mann, Harrington, 193, 194, N  
Maufra, Maxime, 195, M  
Melchers, Gari, 196, M  
Mesdag, Hendrik Willem, 197, O; 198, N  
Metcalf, Willard L., 199, M; 200, K; 201, M  
Meyner, Walter, 202, I  
Miller, R. E., 203, N  
Molarsky, Morris, 204, I  
Monet, Claude, 205, M; 206, N  
Moret, Henry, 207, M  
Morrice, James W., 208, M  
Muhrman, Henry, 209, N; 210, I  
Muirhead, John, 211, O; 212, J  
Murphy, Hermann Dudley, 213, I  
Murphy, J. Francis, 214, M  
Neuhuys, Albert, 215, M  
Nichols, Hobart, 216, I  
Nicholson, William, 217, O  
Nissl, Rudolf, 218, J  
Ochtman, Leonard, 219, N; 220, M  
Olsson, Julius, 221, M  
Oppenheimer, Joseph, 222, M  
Orpen, William, 223, M  
Park, Stuart, 224, J  
Parshall, De Witt, 225, I  
Pearce, Charles Sprague, 226, K  
Pearce, Edgar, 227, I  
Pissarro, Camille, 228, M  
Poore, Henry R., 229, M  
Priestman, Arnold, 230, O  
Pryde, James, 231, J  
Ranger, Henry W., 232, M  
Redfield, Edward W., 233, M; 234, N

Reid, Robert, 235, O  
Renoir, Pierre Auguste, 236, K  
Rivière, Briton, 237, O  
Robinson, William S., 238, N  
Rook, Edward F., 239, N  
Rosen, Charles, 240, 241, I  
Roth, Ernest David, 242, 243, I  
Sándor, Mathias, 244, J  
Sargent, John S., 245, M; 246, N  
Schofield, W. Elmer, 247, 248, M  
Schramm-Zittau, Rudolf, 249, N; 250, K  
Schwartz, Andrew T., 251, O; 252, N  
Sewell, Robert V. V., 253, I  
Shannon, Charles, 254, N  
Shannon, J. J., 255,  
Simon, Lucien, 256, N  
Sisley, Alfred, 257, M  
Sorolla y Bastida, Joaquín, 258, M  
Sotter, George W., 259, 260, I  
Spencer, Robert, 261, M; 262, I  
Steer, P. Wilson, 263, M  
Stehlin, Caroline, 264, I  
Streeton, Arthur, 265, N  
Stevenson, R. Macaulay, 266, N  
Stoddard, Alice Kent, 267, I  
Symons, George Gardner, 268, O; 269, N  
Tanner, Henry O., 270, M; 271, O  
Taylor, Charles J., 272, I  
Thayer, Abbott H., 273, M  
Thomason, Frances Q., 274, 275, I  
Thompson, Leslie, P., 276, I  
Tito, Ettore, 277, J; 278, M  
Tryon, D. W., 279, M

Twachtman, John H., 280, M  
Ullman, Eugene Paul, 281, I  
Vaillant, Louis David, 282, M  
Vander Veer, Mary, 283, I  
Van Der Weyden, Harry, 284, M  
Wagner, Fred, 285, I  
Wall, A. Bryan, 286, I  
Watkins, Susan, 287, I; 288, N; 289, I  
Waugh, Frederick J., 290, N  
Weir, J. Alden, 291, 292, M; 293, M  
Wendel, Theodore, 294, J; 295, O  
Wetherbee, George, 296, N  
White, Henry C., 297, N  
Wiegand, Gustave, 298, 299, I  
Wiles, Irving R., 300, N  
Woodbury, Charles H., 301, M; 302, N  
Yates, Cullen, 303, I  
Young, Charles Morris, 304, M

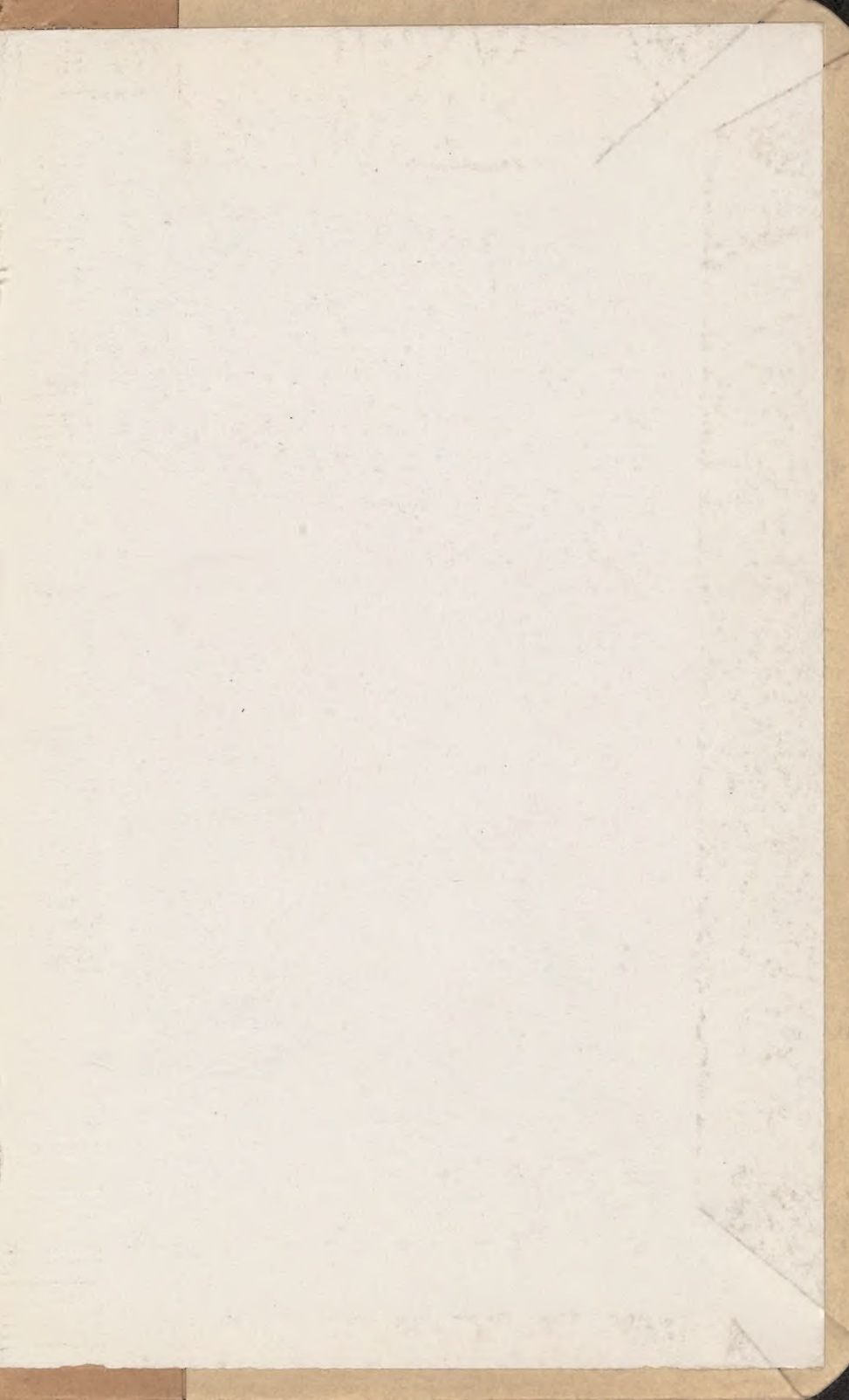












SMITHSONIAN LIBRARIES



3 9088 02030 7351

